

LEGALLY BLONDE: THE MUSICAL AUDITION PACK

Everything you need to know to nail your audition!



IMPORTANT DATES

Term 4 rehearsals

Sunday 3rd December 10am – 1pm

Tuesday 5th December 4–7pm

Thursday 7th December 4–7pm

Wednesday 13th December 10am – 3pm

Regular rehearsals every **Wednesday 1:30pm – 4pm, Thursday 4–7pm and Sunday 10am – 1pm** in Term 1

Holiday rehearsals

Wednesday 13th December

January 28th and 29th

April 10–14th

Tech and dress Rehearsals – Compulsory

April 10th, 11th, 12th and 14th.

Performance Dates – Compulsory

April 18th – 20th Term 2 Week 1



AUDITION TIME LINE

Tuesday 21st November – Singing and Acting Audition

Thursday 23rd November – Dance Audition

Tuesday 28th November – Call Back 1

Thursday 30th November – Call Back 2

All auditionees will attend a singing, acting and dancing audition. Some will also be asked to attend additional call back auditions



AUDITION REQUIREMENTS

✦✦ Tuesday 21st November – **Singing and Acting Audition (compulsory)**

Group of 5 between 4–7:30pm

Prepare 2 songs and 1 script from the provided.

✦✦ Thursday 23rd November – **Dancing Audition (compulsory)**

4pm – 5:30pm

5:30 – 7pm Dance Call Backs

✦✦ Tuesday 28th November – year 10 and 11 call backs

Thursday 30th November – final call backs



SINGING AUDITION

Female roles / ensemble:

Excerpt 1: Omigod You Guys, Bars 77–89 (pick one of the 3-part harmonies)

PLUS choose one of:

Excerpt 2: So Much Better, bars 101 – 123

OR

Excerpt 3: Legally Blonde Remix, Bars 4 – 38

OR

Excerpt 4: Gay or European, Bars 41 – 70 (this excerpt is for students who do not want a lead role)

Male Roles / Ensemble:

Excerpt 1: Gay or European, Bars 41 – 70

PLUS choose one of:

Excerpt 2: Chip on My Shoulder, Bars 41 – 76

OR

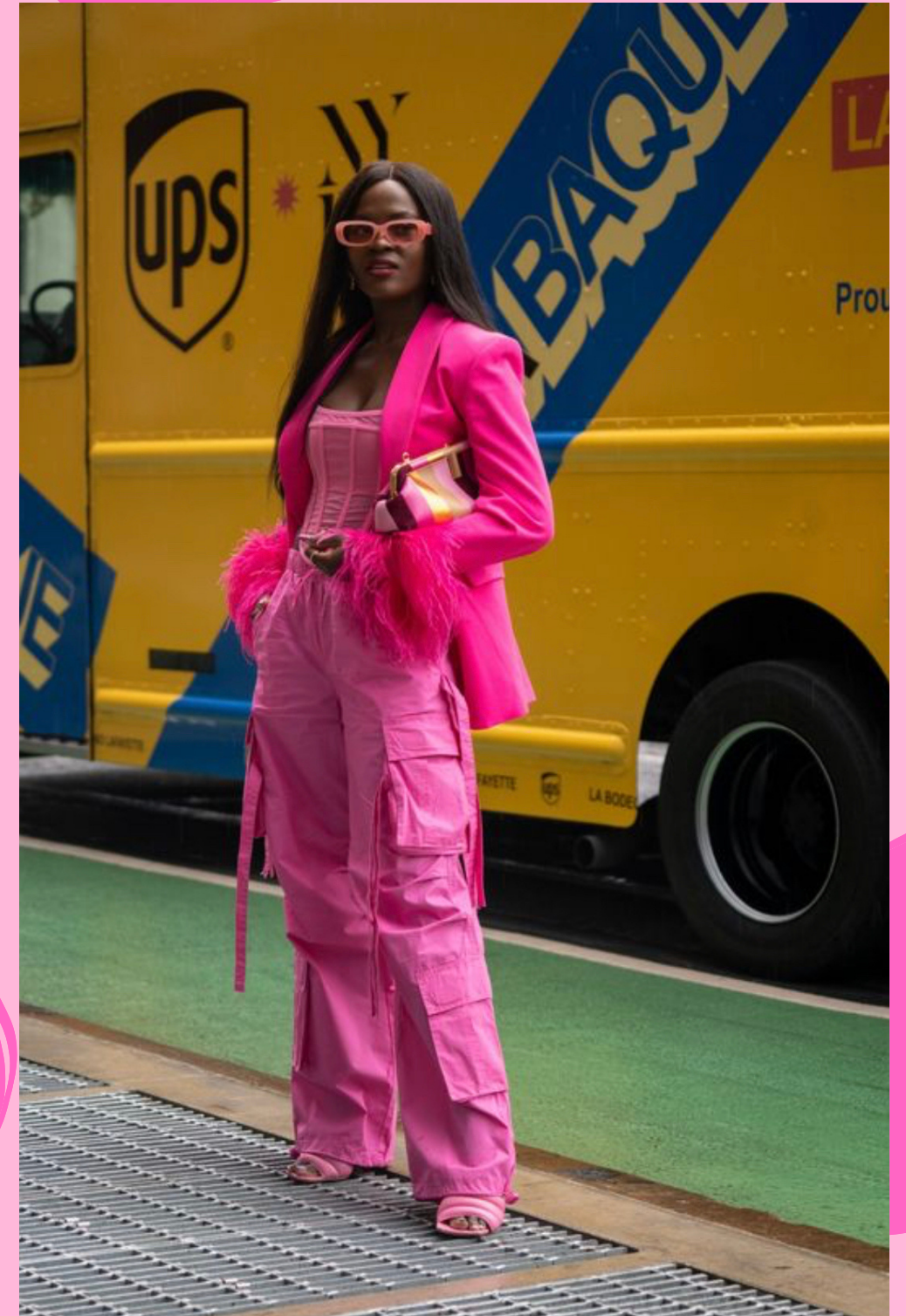
Excerpt 3: Blood in the Water, Bars 237 – 270

ACTING AUDITION

All roles / ensemble monologue script:

Prepare a performance of the following monologue from Fifteen Minutes by Jane Martin. We will be using American accents in the performance and recommend you use an accent in the audition.

Anyway, this guy, the director, actually used a buzzer. zzzzzzzzz. Really. He would sit there wearing a Yankee's baseball cap and push this buzzer after each laugh line for as long as he thought the laugh would last. Laugh line. zzzzzzzzz. This was to train us not to step on teh laugh. Can you beleive it? Really. Oh, he trained us, believe me. The show opens, there are no laughs but we are waiting for the buzzer, A two-hour play lasted three hours while we paused for laughs that didn't exist. I aged seven years that night.



DANCING AUDITION

Everyone is required to attend the dance audition 4 – 5:30pm

No preparation is necessary! Wear clothes you can move in and shoes that you can dance in – sneakers, jazz shoes or character shoes.

Some students will be asked to stay back for the dance call backs. This will help determine the dance troupe and roles which require more specialised dancing.



CALL BACK AUDITIONS

Only some students will be required to attend call back auditions. Material for call backs will be provided when required.



CHARACTERS

Legally Blonde has a large cast with exciting performance opportunities for all! We are casting up to 28 actors for singing and/or speaking roles, and accepting around 50 actors in total to include a non-speaking ensemble and a specialised dance troupe. Below are the lead and supporting roles that are available. Please note that this list is not comprehensive, as there are numerous speaking ensemble roles.

FEMALE CHARACTERS

ELLE WOODS Elle is a sorority girl who follows her ex-boyfriend to Harvard Law School and realizes that she has more than just a pretty face and a bubbly personality to offer the world! She is lovable, determined, vulnerable, energetic and outgoing! A true triple threat, tap dance skills are a plus. Gb3-G5 Soprano Belt

PAULETTE BUONOFUONTE Paulette is the funny owner of Hair Affair, a local salon. She becomes friends with Elle and longs to marry a man from Ireland. She and Elle help each other achieve their dreams! Ability to do a Bostonian accent is a plus, a strong singer with a powerful belt to match the personality! A3-A5 Soprano Belt

PILAR, MARGOT & SERENA Pilar is the sassy and sensible sorority sister. Margot is the seemingly dim-witted, boy-crazy sorority sister. Serena is the energetic cheerleader sorority sister. Margot, Serena, & Pilar are Elle's entourage who follow her through the story acting as her "Greek Chorus". Strong singers and dancers with good comic timing and youthful energy - think girl band vibes! G#3-F5 Belt

VIVIENNE KENSINGTON Vivienne is an overachieving, stuck-up, wealthy, smart and savvy law student who is intellectually driven. Yet she feels very threatened by Elle's presence at Harvard. A3-5 HUGE Soprano Belt

FEMALE CHARACTERS

BROOKE WYNDHAM Brooke is an exercise video star and former Delta Nu sorority girl who was accused of murder. Being physically fit is a must for this role, to properly do high level aerobics with enough stamina to continue singing. You may be asked to jump rope while singing in a call back audition. A3-G5 Alto or Soprano

ENID HOOPS Enid is a strong, opinionated, feminist law student at Harvard. Great comedic timing.



MALE CHARACTERS

EMMETT FORREST Emmett is a smart, quirky, sensitive and personable law student. He ends up taking Elle under his wing and believes in her when it seems that no one else does. A strong singer/actor with great comedic timing! B2–A4 Tenor

PROFESSOR CALLAHAN Callahan is a pompous and manipulative law professor at Harvard. Callahan should be charismatic but able to turn instantly into a conniving shark at the turn of a hat. A2–F#4 Baritone

WARNER HUNTINGTON III Warner is attractive and charming but very self-absorbed. He will do whatever it takes to achieve his dream of becoming a senator, including breaking Elle's heart. Actor must be very comfortable on stage to best display the character's charisma! Eb3–Ab4 Tenor



ADDITIONAL CHARACTERS

ELLE'S UCLA FRIENDS AND FAMILY:

Elle's Mom – Elle's Mom – (C4 – E5 Alto) – High society socialite from Malibu

Elle's Dad – (D3 – E#4 Baritone) – High society golfer from Malibu.

Kate – (Bb3 – Eb5 Alto) – Delta Nu scholastic chair, the bookworm! Must be a strong dancer – will be featured in the Greek Chorus in later songs.

Leilani, Gaelan – (B3 – Eb5 Alto) – Delta Nu sorority sisters with vocal solo. Must be strong dancers will be featured in the Greek Chorus in later songs.

Grand Master Chad – UCLA frat boy. Must be able to rap.

HARVARD STUDENTS AND STAFF:

Sundee Padamadan – A foreign Harvard law student. Former leader of his/her country.

Aaron Schultz – A smug and arrogant Harvard law student.

Whitney – Vivienne's best friend at Harvard Law

Winthrop, Pforzheimer, Lowell – Harvard Law admissions officers

ADDITIONAL CHARACTERS

MALL AND SALON STAFF AND PATRONS:

Store Manager – A department store manager
Saleswoman – A department store saleswoman who underestimates Elle's intelligence

Cashier, Kiki the Colorist at Hair Affair – Strong Dancers

Bookish Client – Patron at Hair Affair

Perfume Clerks – Saleswomen at H&H

COURTROOM:

Nikos Argitakos – Brooke Wyndham's pool boy.

Carlos – Nikos' "best friend".

Chutney Wyndham – Brooke Wyndham's jealous step-daughter. A trial witness.

Judge, Court Stenographer, D.A. Joyce Riley, TV Reporter – Featured characters in the courtroom trial.

OTHER:

Dewey – Paulette's rude, mean, dog-stealing, trailer-trash ex-boyfriend.

Guard, Dana – Featured characters in Boston Women's Correctional Facility

REHEARSAL SCHEDULE

Term 4

Week 10

Sunday 3rd December 10am-1pm

Tuesday 5th December 4-7pm

Thursday 7th December 4-7pm

Week 11

Wednesday 13th December 10am – 3pm

Holidays

Sunday 28th January 10-4pm

Term 1

Week 1

Monday 29th January 10 – 4pm

Wednesday 31st January 1:30pm – 4pm

Thursday 1st February 4-7pm

Sunday 4th February 10am- 1pm

Week 2

Wednesday 7th February 1:30 – 4pm

Thursday 8th February 4-7pm

Sunday 11th February 10am – 1pm

Week 3

Wednesday 14th February 1:30 – 4pm

Thursday 15th February 4-7pm

Sunday 25th February 10am – 1pm

Week 4

Wednesday 28th February 1:30 – 4pm

Thursday 29th February 4-7pm

Sunday 3rd March 10-1pm

Week 5

Wednesday 6th March 1:30-4pm

Thursday 7th March 4-7pm

Sunday 10th March 10-1pm – Labour Day Weekend

Week 6

Wednesday 13th March 1:30-4pm

Thursday 14th March 4-7pm

Sunday 17th March 10-1pm – Community Day Weekend

Week 7

Wednesday 20th March 1:30 – 4pm

Thursday 21st March 4-7pm

Sunday 24th March 10-3pm

Week 8

Wednesday 27th March 1:30 – 4pm

Thursday 28th March 4-7pm – Easter Holidays

TECH, DRESS AND SHOW DATES

Holidays

Wednesday 10th April 10-4pm

Thursday 11th April 10- 4pm

Friday 12th April 10-4pm

Sunday 14th April 10-4pm

Term 2 Week 1 – SHOW WEEK

Monday 15th April 4-10pm – Dress rehearsal

Tuesday 16th April – 4-10pm – Final Dress – Photos

