

In partnership with

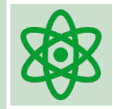


Footsteps on the Sands of AI for Higher Education

Moving Beyond Adhoc

Dr Julie Lindsay and Dr Lisa Jacka

Ubiquitous AI



AI has transitioned from science fiction to everyday reality



AI education market worth USD\$1767 mill in 2023



AI permeates aspects of academia, supporting both faculty and students



AI is reshaping the education landscape

University Context

Successful distance and online education

70% of students study full time online

Recognizes the importance of AI in online and virtual learning

Actively exploring AI's potential

Grappling with ethical dilemmas



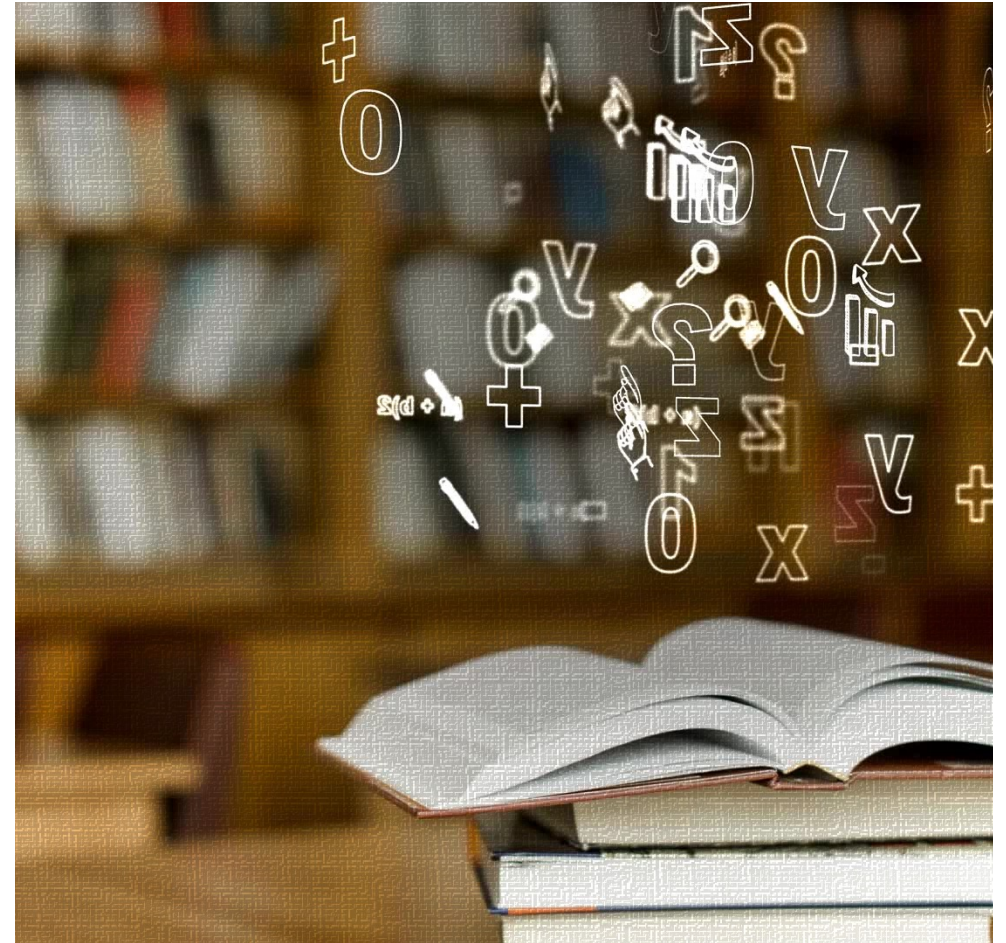
University of
**Southern
Queensland**

AI's Impact Areas

Academic
Efficiency

Learning Design

Learner-Centric
Assessment



In partnership with



Academic Efficiency



Streamline

Streamline administrative tasks



Automate

Automate repetitive processes



Enhance

Enhance overall efficiency



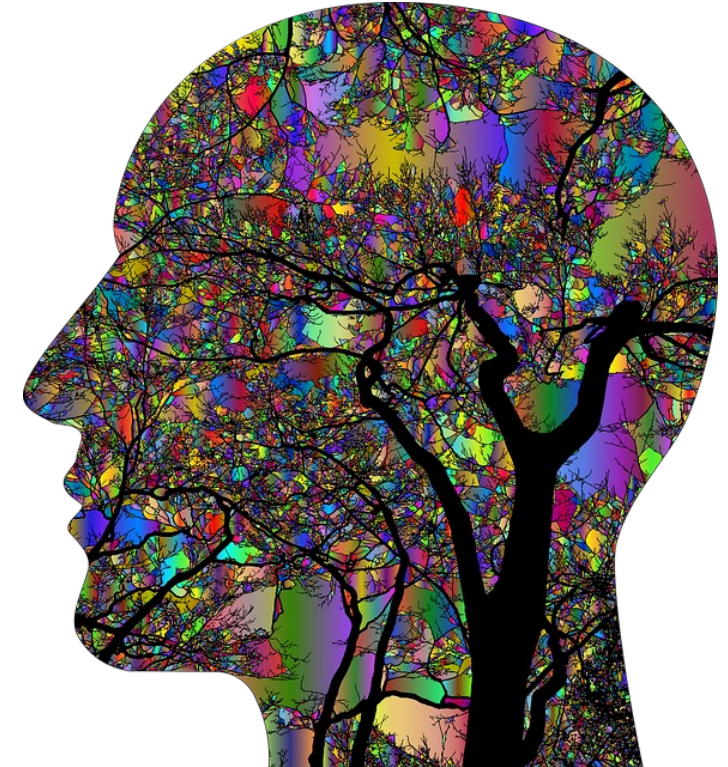
Foster

Foster AI fluency and build capacity



Develop

Develop positive mindsets





INTERNATIONAL
COUNCIL FOR OPEN AND
DISTANCE EDUCATION



Globethics

In partnership with



Academic Efficiency



Access to GenAI is a
game changer



Copilot, ChatGPT,
Claude



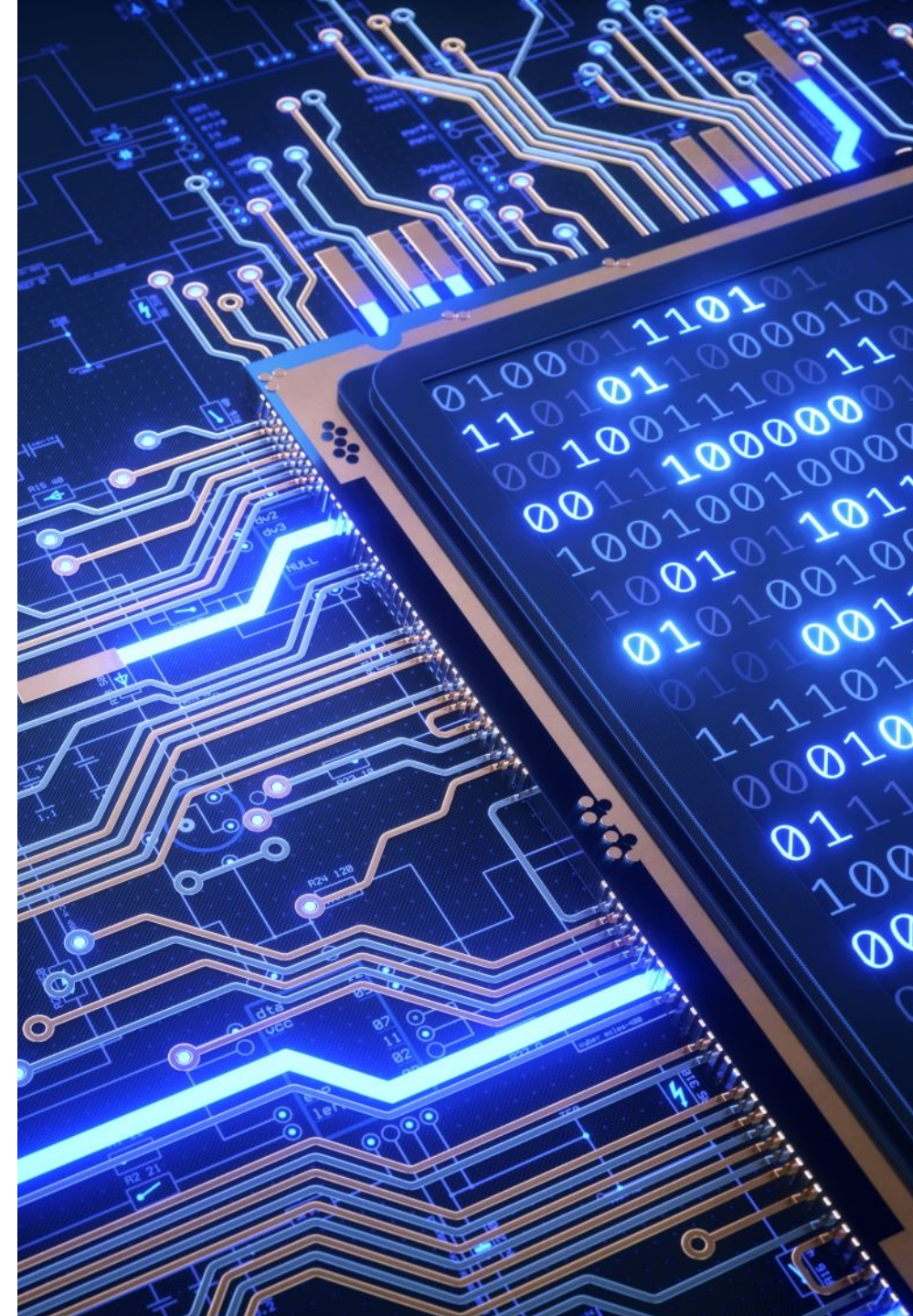
Prompt engineering



Ethics – should the
AI tool be credited?

**ICDE LEADERSHIP
SUMMIT 2024**

HOSTED BY GLOBETHICS



Learning Design

- Assist in creating personalized learning experiences
- Automated feedback
- Adapting content to individual needs
- Quick creation of learning artefacts



Learning Design



Learning design is influenced by the relationship between the teacher and the learner and with the inclusion of technology the learner and the technology.



AI use means the power of the students to control their learning journey is heightened and the teacher has a role in which they are mediating an environment for this to flourish.

Learner-Centric Assessment



Provide insights into
student
performance



Identify areas for
improvement



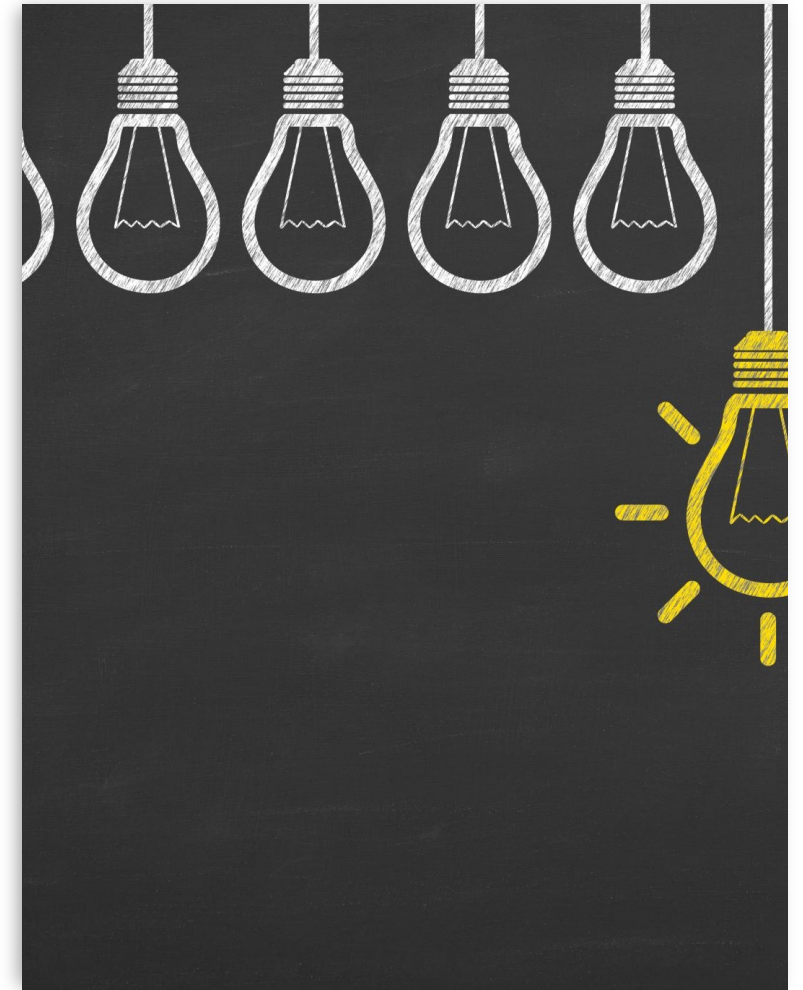
Offer timely
feedback



Leverage AI as a
support tool

Learner-Centric Assessment

AI integration is an opportunity to reimagine **what we are assessing** and **how we are assessing**, and above all **why we assess** students at all.



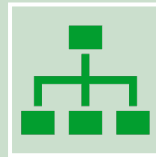
Learner-Centric Assessment

How and when should
GenAI be used for
assessment?

- Not to be used at all
- May not be an advantage to use
- Assessment design encourages AI use



Moving Beyond Adhoc



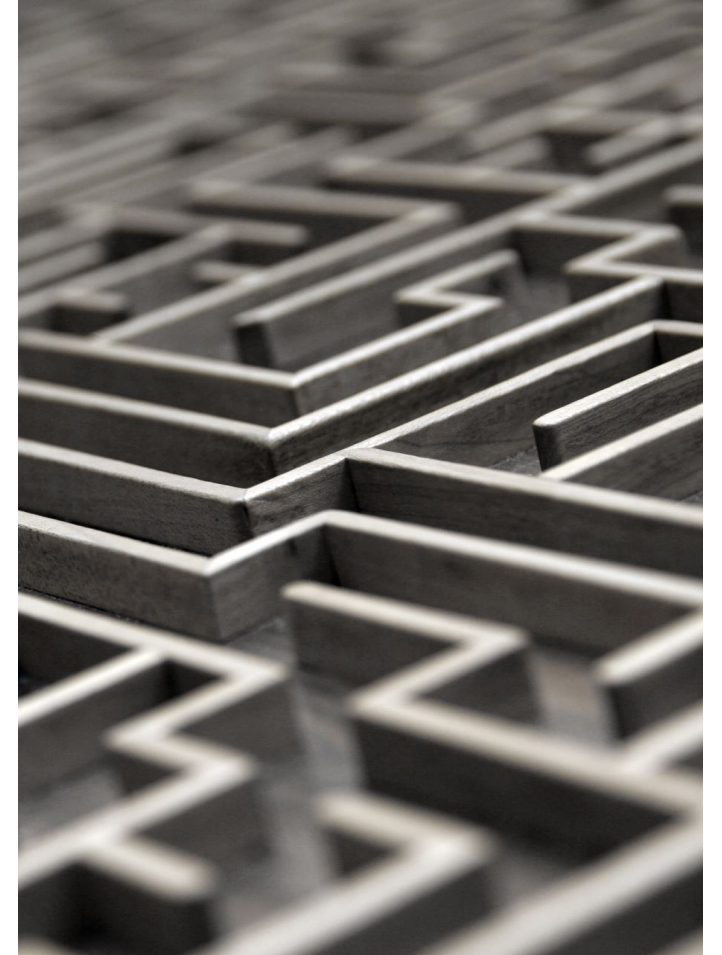
Consolidation into more systematic whole-institution planning that goes beyond the initial adhoc approach.



The area in most need of digital transformation is teachers and teaching.

Moving Beyond Adhoc

Designing and implementing an AI framework for education is one way forward to shift the current practice from ad-hoc to planned and implemented with intention and meaning.



AI Pedagogy Project

Augmenting learning and teaching in higher education
using Artificial Intelligence



**AI for
Learning &
Teaching
Collective**

**Learning
Design and
Assessment**

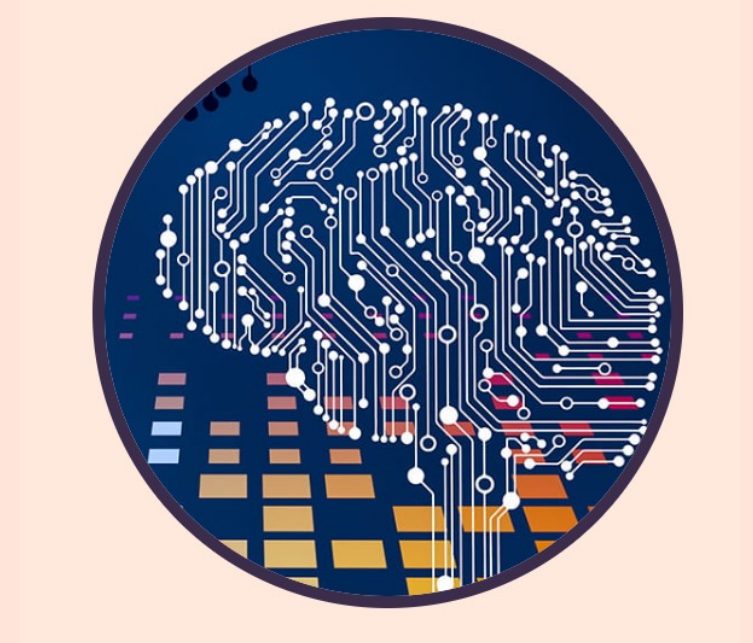
**Academic
Development**

AI Tools

**Research
into AI
impact on
L&T**

Artificial Intelligence for Learning and Teaching Collective (AILTC)

- A Community of Practice within the domain of AI
- Academic and professional stakeholders
- Share experiences, break down silos
- Symposium sessions with external and internal speakers



Learning Design and Assessment

- Multimodal, ongoing, goal-based to integrate AI into learning design and delivery
- Foster collaboration between instructional designers, subject matter experts and others
- Finding, piloting and planning to implement relevant AI tools and associated pedagogies



Academic Development

- To enhance the understanding of AI in the higher education learning and teaching context
- Sharing of resources, research, and practical examples
- Seminar series
- Online modules



AI Tools

- Development and/or integration of AI-powered tools and applications specifically designed for educational purposes, such as:
 - Chatbots for student support
 - AI-driven adaptive learning platforms
 - AI-assisted essay grading systems
 - AI-powered virtual classroom assistants



Research into Impact of AI in L&T

- Multi-disciplinary research projects and case studies
- Evaluate the effectiveness of AI-based pedagogical approaches
- Exploration & impact of AI on:
 - student engagement
 - learning outcomes
 - teacher productivity
 - overall educational experiences.



In partnership with



Thank you!

Dr Julie Lindsay
University of Southern Queensland
Julie.lindsay@unisq.edu.au

AI Pedagogy Project

<https://create.usq.edu.au/edtech/ailtc/ai-pedagogy-project/>