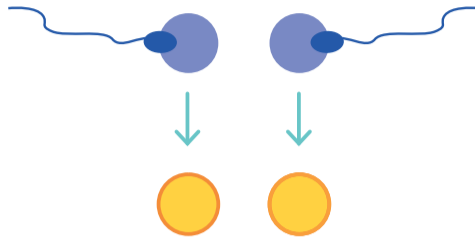


How do dizygotic (fraternal) twins form?

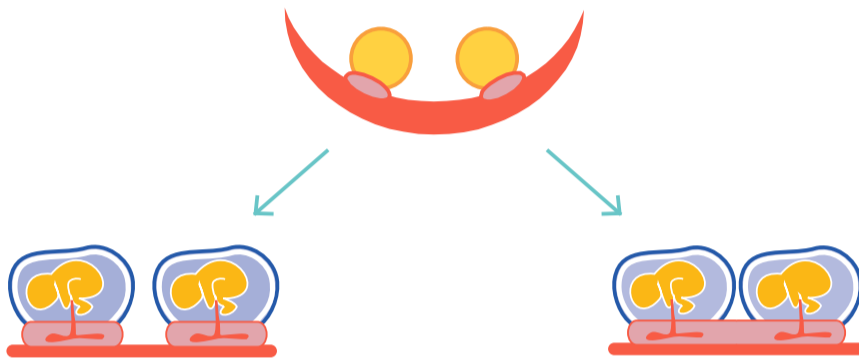
Two eggs are released from the ovaries



Both fertilised to form zygotes



Both develop placentas and implant the uterus



In around 60% of DZ twin pairs, the two placentas (in pink) remain separate

In around 40% of DZ twin pairs, the two placentas fuse

Monozygotic (MZ) or identical twins

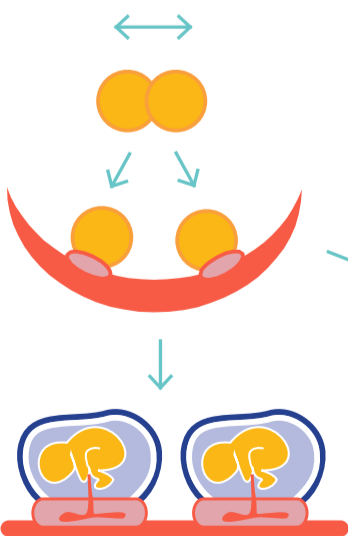
One egg released from the ovaries



Fertilised to form one zygote

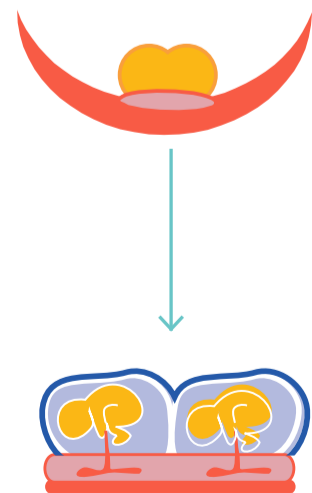


Splits into two before placenta develops (before day 5)



In around 18% of MZ the two placentas (in pink) remain separate

Splits into two after placenta develops (after day 5)



In around 68% of MZ there is one placenta

In around 14% of MZ the two placentas fuse