

The Changing Room – Call for Proposals 2025

Deadline for submissions: 9 September 2024



Jade Townsend, *Neke, neke. You are free*, 2022. Courtesy of the artist. Installation view.
Photography by Sam Hartnett.

Gus Fisher Gallery is pleased to announce The Changing Room: a new proposal driven space launching in 2025. Intended as a project space for newly commissioned artwork, The Changing Room will enable a dedicated solo space for Aotearoa-based practitioners.

With three opportunities to create and present artwork across the year, the purpose of this call for proposals is to provide more opportunities for emerging to mid-career artists who are looking to realise bold, ambitious and site-specific projects. Through The Changing Room, Gus Fisher Gallery furthers its support of artists and its commitment to supporting career-defining and transformative contemporary art projects.

The Changing Room will run alongside concurrent exhibitions at Gus Fisher Gallery over the periods February to May, June to August and September to December.

Proposals are welcomed from artists looking to present new and experimental practices in a unique heritage space. Formerly used as a dressing room during the building's former use as radio and television broadcasting studios, The Changing Room features four heritage windows, terrazzo flooring and an antechamber on entry.

Proposals will be selected for the strength of idea and its planned realisation, with original concepts highly encouraged. Artists will be selected by two esteemed alumni of the University in consultation with Gus Fisher Gallery's Curator of Contemporary Art, and Exhibitions Manager.

Application requirements:

Please submit a Word or PDF-formatted proposal of up to two sides of A4 that clearly describes your idea and your intentions for how you would like to use the space. Please describe how this new commissioning opportunity will enable you to develop your artistic practice at this point in your career.

You may submit up to 10 images or video links to work that illustrates your overall practice and intended concept for The Changing Room.

Please send your proposals to: gusfishergallery@auckland.ac.nz.

Artists will receive:

A combined display and materials fee of \$5000

- Technical assistance
- Curatorial dialogue
- Public programming assistance
- Promotion on the Gus Fisher Gallery website and social media channels
- Photographic documentation

Deadline for submissions: Monday 9 September 2024

The Changing Room – specifications

The Changing Room's walls are clad in MDF, with wooden skirting and heritage terrazzo floors. Three powerpoints are available and evenly spaced around the room. The walls can be used freely and participating artists can extend out around the exterior walls of The Changing Room into the room's antechamber, the walls of which are partially constructed from terrazzo. The floor cannot be drilled into or permanently modified, and windows may be temporarily covered to block out ambient light.

Please contact us if you require any further information about the space or have any questions. A 3D model of the gallery space can be shared on request. All enquiries to gusfishergallery@auckland.ac.nz.

See below for visuals and dimensions of the space.

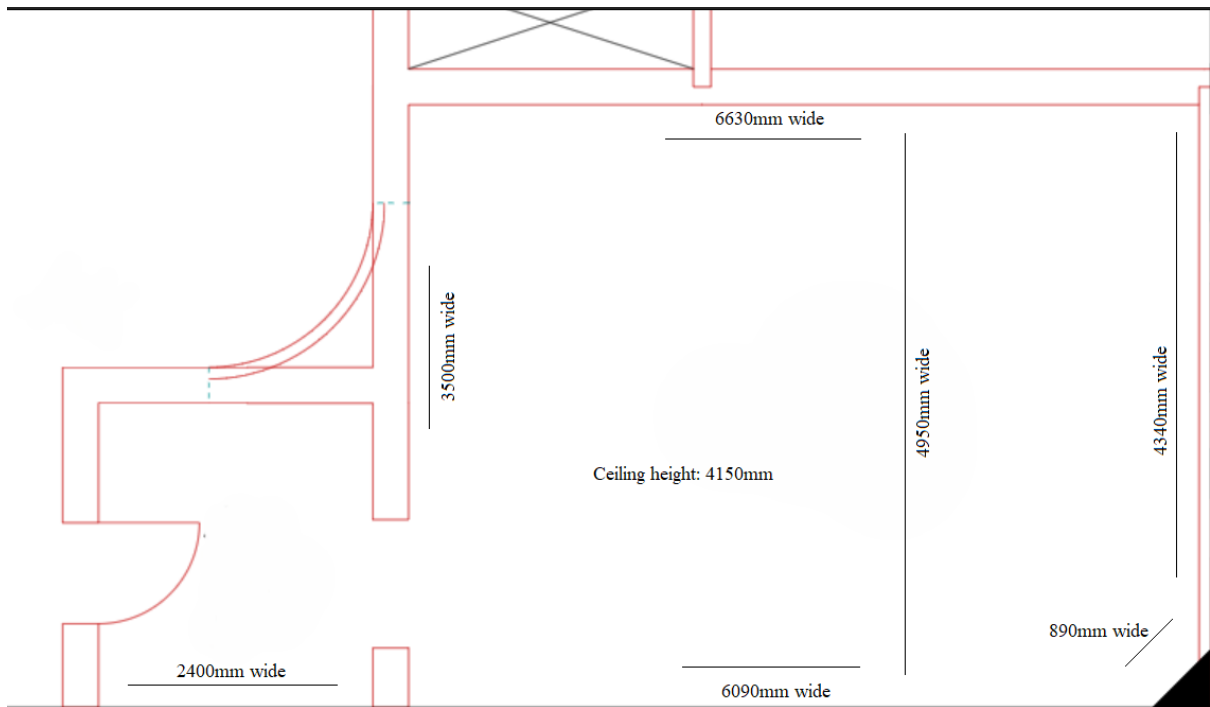


Installation view of *Sarah Munro: Surface Detail* (30 October – 15 December, 2012). Image courtesy of the artist and Sam Hartnett.

Views of the antechamber, which leads into The Changing Room:



Left: Katrina Beekhuis, *Gaze from within* (2024), image courtesy of the artist and Lindsey de Roos. Right: installation view of *Derek Jarman: Delphinium Days* (2024), image courtesy of Sam Hartnett (right).



Floorplan of The Changing Room and the antechamber.

To request a 3D model of this space, please contact gusfishergallery@auckland.ac.nz.

If you have any questions relating to your application, please don't hesitate to contact the gallery or visit the space in person.