

**GUS
FISHER**

GALLERY

74 Shortland Street
Auckland Central
gusfishergallery.auckland.ac.nz

FREE

STORYTELLING THROUGH SĀMOAN ART

09 September
2022

A WORKSHOP SERIES WITH JASMINE TUIĀ
YOUTH PUBLIC PROGRAMME



Creation Stories

The exhibition *Creation Stories*, curated by Simon Denny and Karamia Müller, began with the two creatives talking about their families to one another. By sharing their genealogy, they saw connections between their families in Sāmoa and German-speaking Europe. Revisiting their shared histories allowed them to create maps of creation stories, whakapapa and the passing of knowledge.

Created alongside this exhibition was a youth programme designed to cultivate storytelling. Jasmine Tuiā is a contemporary artist in Aotearoa New Zealand who draws from her Sāmoan heritage. During a series of workshop with the German language learners and art students (Years 11 – 12) at Green Bay High, Tuiā shared how mark making can be utilised to tell stories and represent place.

Technique Siapo

Siapo, also known as tapa, is one of many Sāmoan cultural art forms. Made from Paper Mulberry tree, the cloth goes through a process of being harvested, stripped, separated, scraped and beaten.

Marks are then created in either one of two methods; Siapo 'Elei (The Rubbing Method) or Siapo Mamanu (The Freehand Method).

Tuiā uses freehand methods to explore pre-colonial Pacific thoughts. Her marks are painted according to her memory and the stories surrounding geographic locations.

Create a diagrammatic representation!

Materials you will need:

Rocks*

Mortar and pestle or tea towel*

Ice cube tray/small container*

Paint brushes

Paper or cardboard

**Please note, you can use acrylic paint*

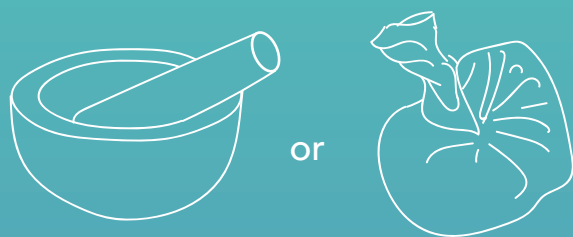
Forage for local rocks on a beach that can be turned into pigment.



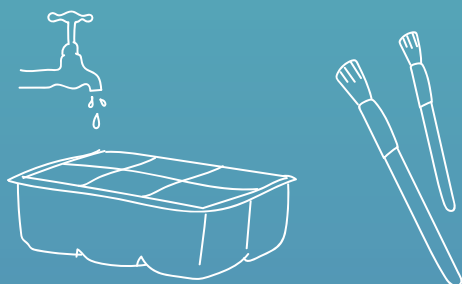
Explore the different colours and textures that can be found.



Ground up your rocks in a mortar and pestle or place them in a tea towel and hit against a hard surface until it becomes a powder.



Place your ground up pigments into an ice cube tray and small amounts of water to create a paint like substance.



Your story

Think of a journey that is important to you. It could be a daily route you take, your local waterways, an area you visit or walk to often or some place special to who you are.

On your paper, use pigment or acrylic paint to mark the first point and use a shape that identifies that place to you. Then, using simple lines, draw the road or path that leads to a destination.



Man-made structures can be painted using geometric shapes.



For natural features, use curves and more fluid lines in your mark-making.

Experiment with various symbols to signify or represent different parts of this map. Consider different thicknesses of line, various colours and sizes.





The Youth Programme was kindly funded
by the Goethe-Institut



www.goethe.de/nz



@goetheinstitut_neuseeland



@gusfishergallery

Programme designed and facilitated by Briana Woolliams