



Campus Connections Aotearoa

Tūhono Aioipī



Annual Report 2021



THE UNIVERSITY OF
AUCKLAND
Te Whare Wānanga o Tāmaki Makaurau
NEW ZEALAND

Enriching lives through youth mentoring

Contents

Message From the Chair of the Board	3
Message From the Campus Connections Aotearoa Directors	5
Programme Overview	7
What Makes Campus Connections Aotearoa Unique?	8
Programme Structure and Timeline	10
Profile of the youth who participated in the programme	14
Experiences of the youth who participated in the programme	15
Profile of the students who participated in the programme	17
Our Governance Board	20
Our Staff	21

Whakataukī

Campus Connections Aotearoa | Tūhono Aiopīpī

Mā te rongo ka mōhio	Listening brings about awareness
Mā te mōhio ka mārama	Awareness brings forth understanding
Mā te mārama ka mātau	Understanding enhances knowledge

The above whakataukī was gifted to Campus Connections Aotearoa by the Kāhui Raukura Reo Maori Alumni Committee, who support the revitalisation of Māori language at the Faculty of Education and Social Work. It is intended to support the te reo name for Campus Connections Aotearoa, which was informed by ideas gathered from young people who participated in the programme. Feedback was collected by PhD candidate Yvonne Ualesi, as part of her research on culturally responsive youth mentoring. She conducted focus groups with youth mentees and with their alternative education (AE) tutors. Both groups were asked what kinds of words and ideas should be captured in a te reo name for the programme based on their programme experiences.

The name Tūhono Aiopīpī refers to the importance of connection, nurturing, balance and well-being in allowing young people to flourish. The Campus Connections Aotearoa Leadership Team is incredibly grateful for the contributions of everyone who was involved in the naming process and gives special thanks to Te Rongopai Morehu for suggesting both the name and the whakataukī. The Leadership Team feels very blessed to have been gifted with a name that so aptly captures the aspirations of the programme.



Message From the Chair of the Board

As Campus Connections Aotearoa Tūhono Aiopipi concludes its fifth year, it is my pleasure to present the 2021 Annual Report on behalf of the Governance Board.

The year saw several changes, including increased funding and staff, thanks to continued support from the Ministry of Youth Development. Additional funding enabled the Campus Connections Aotearoa team to extend the programme delivery period from 12 weeks over one semester to 20 weeks over two semesters. This extended delivery increased the number of University students involved and provided longer-term support to the young people who participate as mentees. The increase in resourcing enabled an expansion of community partnerships. Two new Alternative Education providers chose to partner with Campus Connections Aotearoa over the course of the year, recognising the value that the programme offered the young people they serve. It also resulted in more places for young people to benefit from this impactful programme. The team was able to appoint a Youth and Whānau Worker to strengthen relationships with young people, their whānau and their Alternative Education providers, as well as an Education Specialist to develop comprehensive curriculum resources to support the educational needs of the programme and its participants.

In the face of Covid-19, the team has again proved its ability to adapt and find solutions to the challenges posed by the pandemic. Support for remote learning was increased last year, and the transition to an online platform in Semester Two was a valuable and positive experience for students, despite their practice experiences being cut short by the prolonged lockdown in Auckland.

The Governance Board and I look forward to contributing to the continued success of this important work as we navigate these uncertain times.

ASSOCIATE PROFESSOR MARK BARROW
Dean of the Faculty of Education and Social Work,
Chair of the CC-A Governance Board





Message From the Campus Connections Aotearoa Directors

2021 was another extraordinary year for Campus Connections Aotearoa | Tūhono Aiopipi. Delivering Campus Connections Aotearoa (CC-A) during another year of Covid 19 highlighted the power of adaptability and resilience shown by our staff, student practitioners, AE partners, young people and their whānau.

This year we welcomed 22 incredible young people from the WAE Hub, our Waitakere-based alternative education (AE) partner. We also welcomed a second community partner, ACES (Auckland City Education Services) Maungarei Campus in Term 2 and ACES Maungawhau Campus in Term 3, and their 30 amazing young people. Our young people were supported by 15 exceptional student practitioners during Semester 1 and an additional 15 in Semester 2. We were thrilled to have 7 postgraduate counselling students for both semesters as part of their academic programme placement requirements. Extending our delivery from a 12-week single semester programme to a double-semester delivery that offered 20 sessions to the young people was only possible through generous funding from the Ministry of Youth Development and this had an immediate impact on the number of young people and students the programme reached.

Additional funding from the Ministry of Youth Development also enabled us to hire Sua Arona in a brand new role as Youth and Whānau Worker. Sua was able to spend more time with our youth mentees in their communities at their AE provider sites. This gave us a much deeper insight into their interests, strengths and developmental need and helped strengthen our partnerships. He also added huge value in terms of providing more cultural input to the programme. The extra resource also allowed us to employ an Educational Specialist, Rochelle Wong, who created a comprehensive database of our educational resources with links to the NZ Curriculum and NCEA standards. Rochelle also supported us in creating project-based learning manuals for our student practitioners to use to create hands-on experiential learning activities for our young people. We were also able to recruit Campus Connections Alumni, Aaron Cortez and Steph Ferris, into Youth Worker roles to provide additional mentoring and coordination support during the busier sessions.

Despite the challenges posed by COVID-19, our Semester 1 delivery was fairly smooth, with only one week of lockdown coinciding with student practitioner training. We were able to take on the lessons from 2020 and quickly pivoted to an online delivery. Semester 2 was set to be the largest delivery yet with three AE providers, a growing cohort of youth mentees and a fantastic group of undergraduate and postgraduate students but COVID had other plans for us.

We were only able to deliver two sessions with the young people before Auckland went into a prolonged lockdown that we were not able to exit until after the semester ended. Nevertheless, we continued to support our student practitioner with interactive online lectures and skill development opportunities and, although it was disappointing for everyone, the students still commented on the value of training, lectures, and the limited time with youth.

As always, we want to acknowledge the amazing support of all our community partners - the Waitakere Alternative Education Consortium and the WAE Hub, Auckland City Education Services at the Maungarei and Maungawhau Campuses, and their dedicated group of AE tutors and other teaching support staff who accompany the young people to Epsom each week. We also thank our Governance Board for the sage advice our board members offer and feel very privileged to benefit from such a depth and range of collective expertise. Thank you all for your continued belief in and support of us and the programme.

Finally, we are incredibly thankful for our small but amazing team consisting of Kiri (Case Manager), Sua (Youth and Whānau Worker), Rochelle (Educational Specialist), Sue (Operations Assistant), Steph (Programme Assistant), and Aaron (Youth Worker). Their readiness to adjust and pivot to support the programme was amazing.

Sadly, at the end of the year we said a bittersweet goodbye to Kiri. We were thrilled that she was able to secure a permanent position within the Faculty of Education and Social Work as a Professional Teaching Fellow because she'll still be onsite and close by but it is hard to imagine Campus Connections Aotearoa without her. We have learned so much from working alongside her over the past few years and her contributions to everyone in the Campus Connections whānau have been phenomenal. Her spirit is woven deeply into the fabric of this programme. Go well Kiri, we wish you well on this new journey and will think of you (and hopefully see you) often.

Our fingers are crossed that 2022 will allow us to see through the extended delivery model with a bit less upheaval!

PAT BULLEN and KELSEY DEANE
Directors, Campus Connections Aotearoa



Programme Overview

Campus Connections Aotearoa is an evidence-informed youth mentoring programme that operates at the University of Auckland's Epsom Campus, for 12 weeks, in Semester 2 each year. Youth, aged 13-16 years and enrolled with a partnering AE provider, are invited to participate in the programme. University of Auckland undergraduate and postgraduate students also participate in the programme by enrolling in one of three service-learning courses connected to the programme.

Youth mentees and student practitioners (mentors, coaches and counsellors) participate to form a therapeutic mentoring community. Postgraduate student counsellors, as part of the mentoring community, are available during the programme to provide extra support for each young person as needed.

Young people have opportunities to interact with



each other in a safe, supportive, and fun environment. Students have opportunities to develop important skills with the support of an experienced team of professionals and a community of peers.

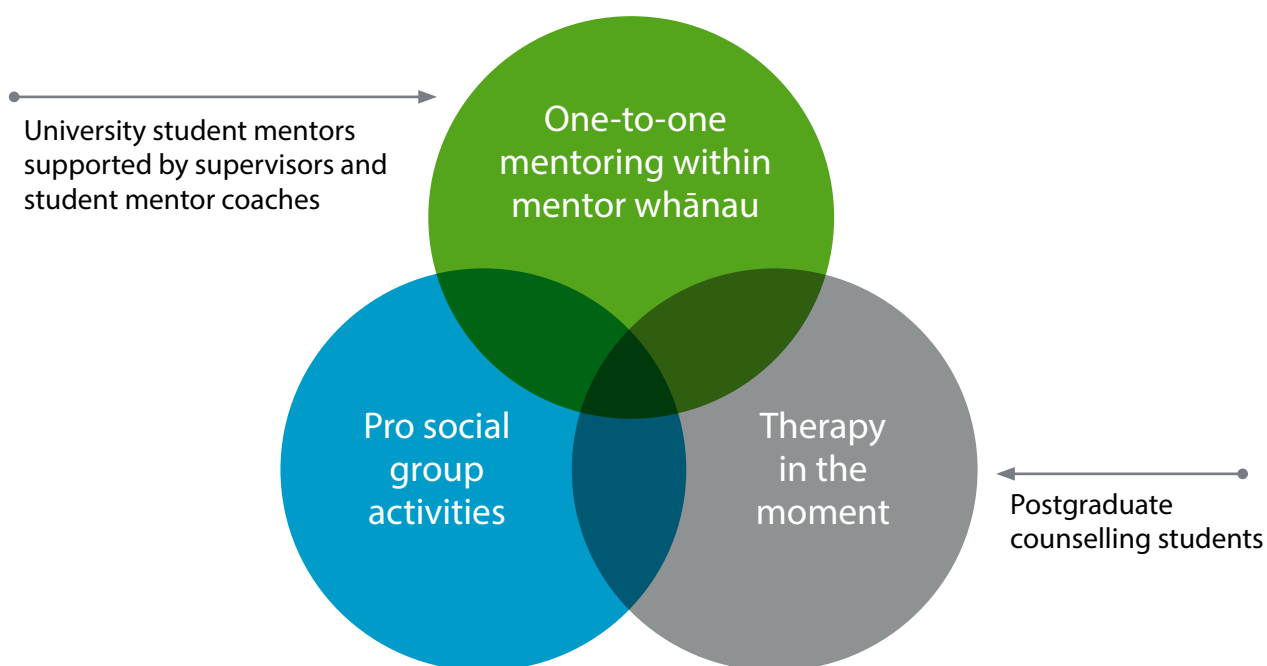
We outline below what a typical day at CC-A looks like:

8.00–9.00am	Counselling Meeting
	Counselling team meet to discuss and plan for the needs of young people involved in the programme
9.00–10.00am	Youth Work Practice Lecture
	Key theory and concepts are presented and discussed for direct application to practice in the coming mentoring session
10.00–10.30am	Walk and Talk
	Youth arrive and take a 30-minute walk on the University of Auckland campus with their mentors
10.30–11.30am	Supporting Transition Success
	Student mentors and youth mentees work on youth-identified transition plans and personal goals
11.30am–12pm	Whānau-style Lunch
	Youth mentees and student mentors enjoy a shared meal provided by CC-A
12.00–1.00pm 1.00–2.00pm	Pro-social Activities
	Mentors and mentees participate in activities (e.g. educational, sports, music, art, cultural) with other Campus Connections Aotearoa youth mentee and student mentor participants
2.00–3.00pm	Student Debrief
	Students engage in a supervised group debrief to discuss their practice and receive constructive developmental feedback



What Makes Campus Connections Aotearoa Unique?

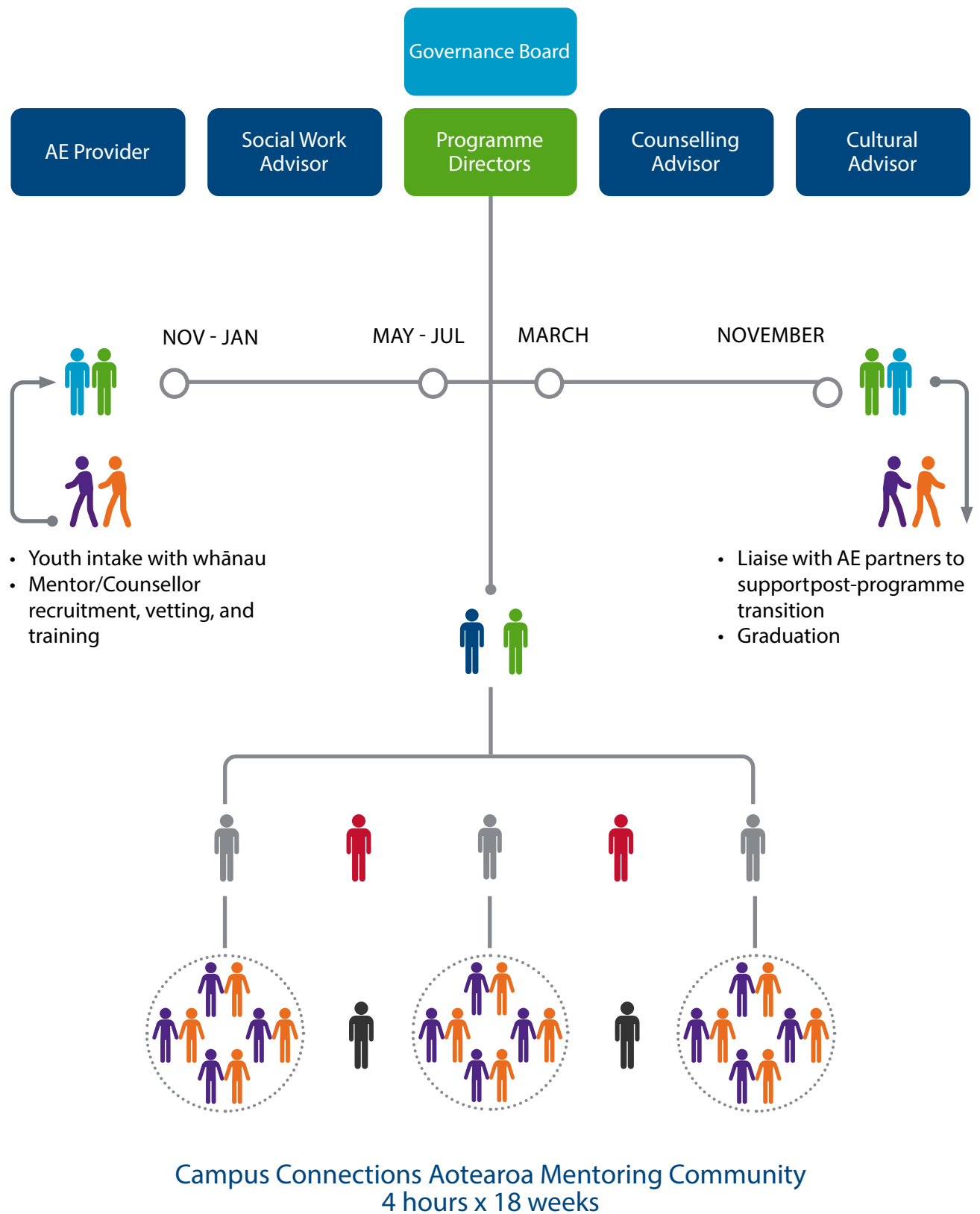
Campus Connections Aotearoa combines strategies known to be effective under some conditions while mitigating the recognised risks associated with each standalone component.



A powerful multi-level therapeutic mentoring programme designed to help support young people with complex needs



Programme Structure and Timeline







Students who participated in Campus Connections Aotearoa in 2020 shared what they most appreciated:

"Reflecting back on the past year, CC-A has taught me a lot about myself as a person and my capability as a practitioner ... It has also helped me to understand a different perception of life through the young people, and how to better support them."

"CC-A has made me a more purposeful youth worker and grown the skillset that I can use in my work"

"CC-A has influenced me deeply with their youth-centered approach ... I have a passion for working with rangatahi and I credit that very much to my two years with you."



Profile of the youth who participated in the programme

52

YOUTH

46 new participants
6 past participants



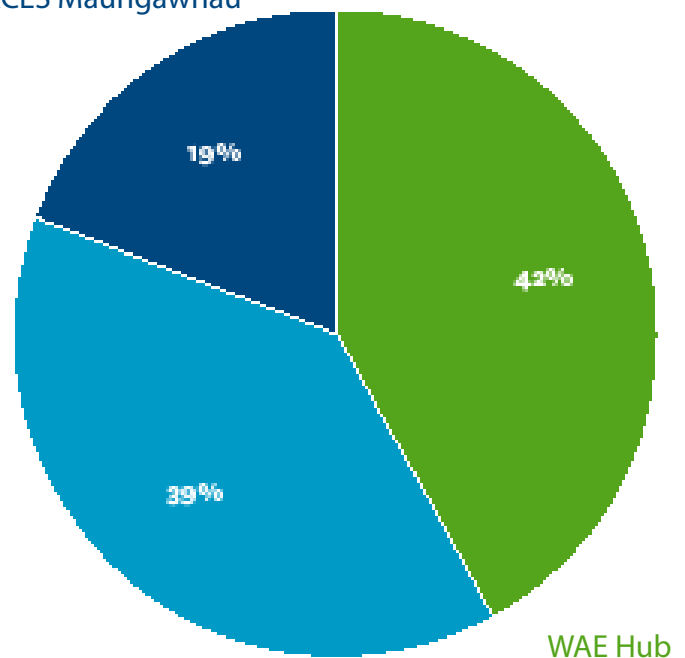
% of Youth from each AE provider:

31% Female
67% Māori
18% European

67% Male
2% Gender Diverse
31% Pacific Peoples

ACES Maungarei

ACES Maungawhau



Youth were aged:

12YRS-2%



*Youth mentee quotes about their experiences in the programme in 2021 could not be included because programme delivery and end of programme data collection was disrupted by the COVID-19 lockdown from August - November.



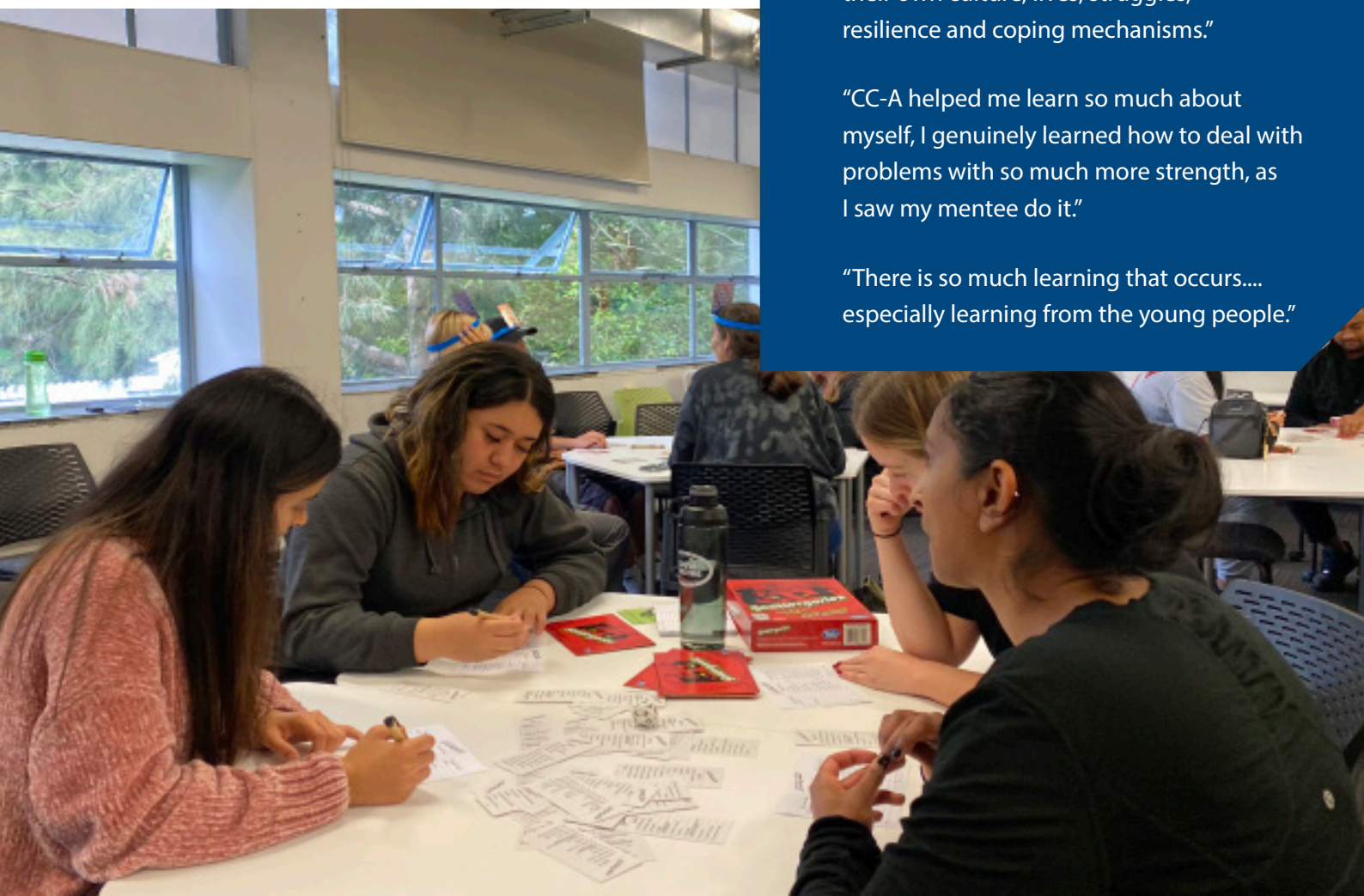
Students who participated in Campus Connections Aotearoa in 2021 shared what they most appreciated:

"I gained an insight of the youth world in terms of thinking, feelings and behaviours."

"I was taught by these young people of their own culture, lives, struggles, resilience and coping mechanisms."

"CC-A helped me learn so much about myself, I genuinely learned how to deal with problems with so much more strength, as I saw my mentee do it."

"There is so much learning that occurs.... especially learning from the young people."



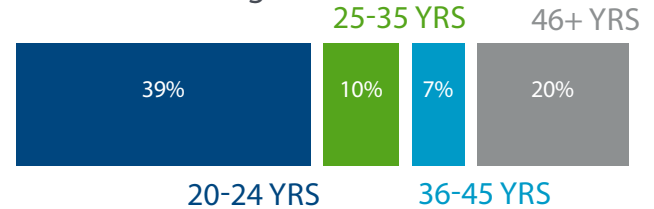
Profile of the students who participated in the programme

30

STUDENTS

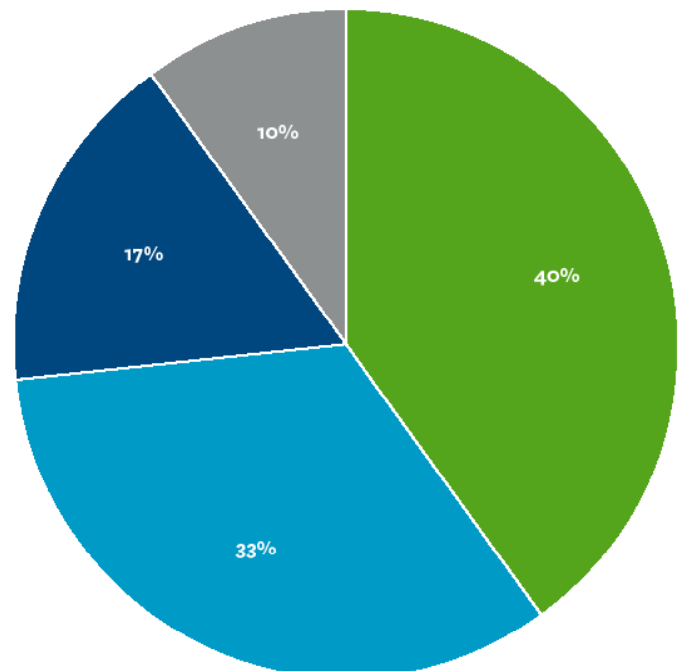
11 Both Semesters
7 Semester One
12 Semester Two

Students were aged:



Students' programme of study:

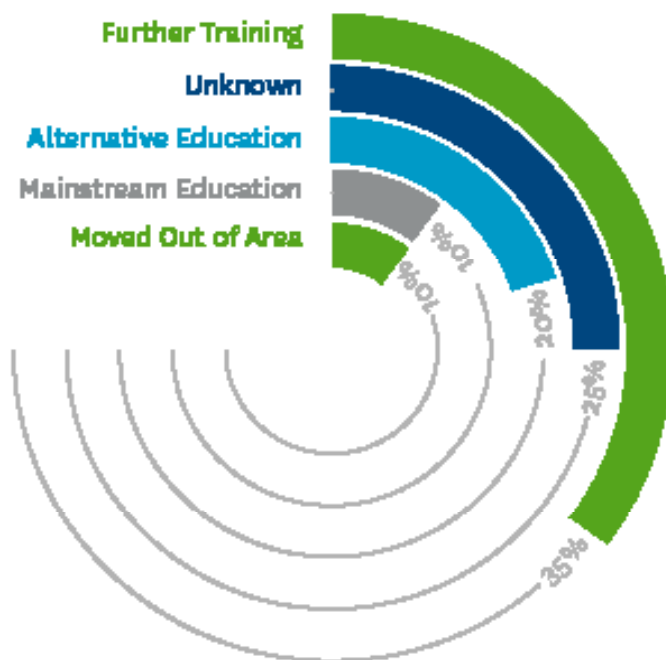
87% Female 13% Male
07% Māori 30% Pacific Peoples
40% European 30% Asian
07% Latin American, African



- Bachelor of Social Work
- Postgraduate Diploma Counselling
- Bachelor of Arts
- Bachelor of Science

Past Campus Connections Aotearoa Youth and Students (2020)

Activities of the 2020 cohort of youth and student participants 12 months after completing the CC-A programme:

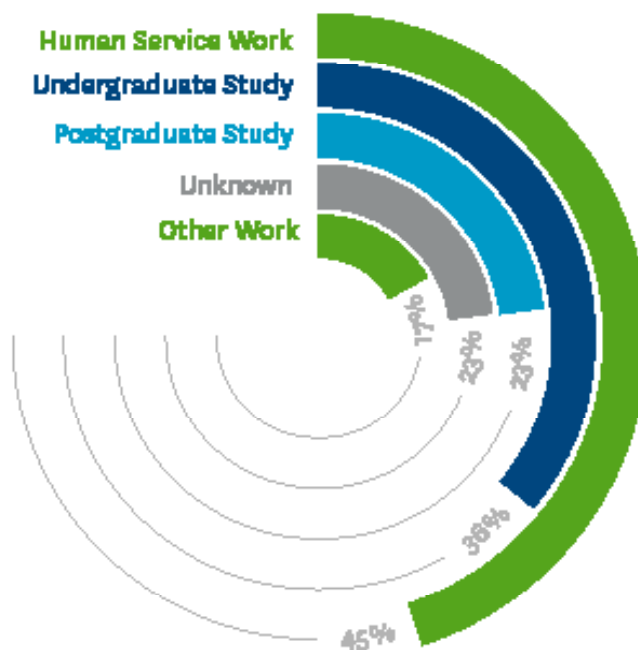


20 youth participants

Graph represents the activities of youth participants at 12 months post-programme.

22 student participants*

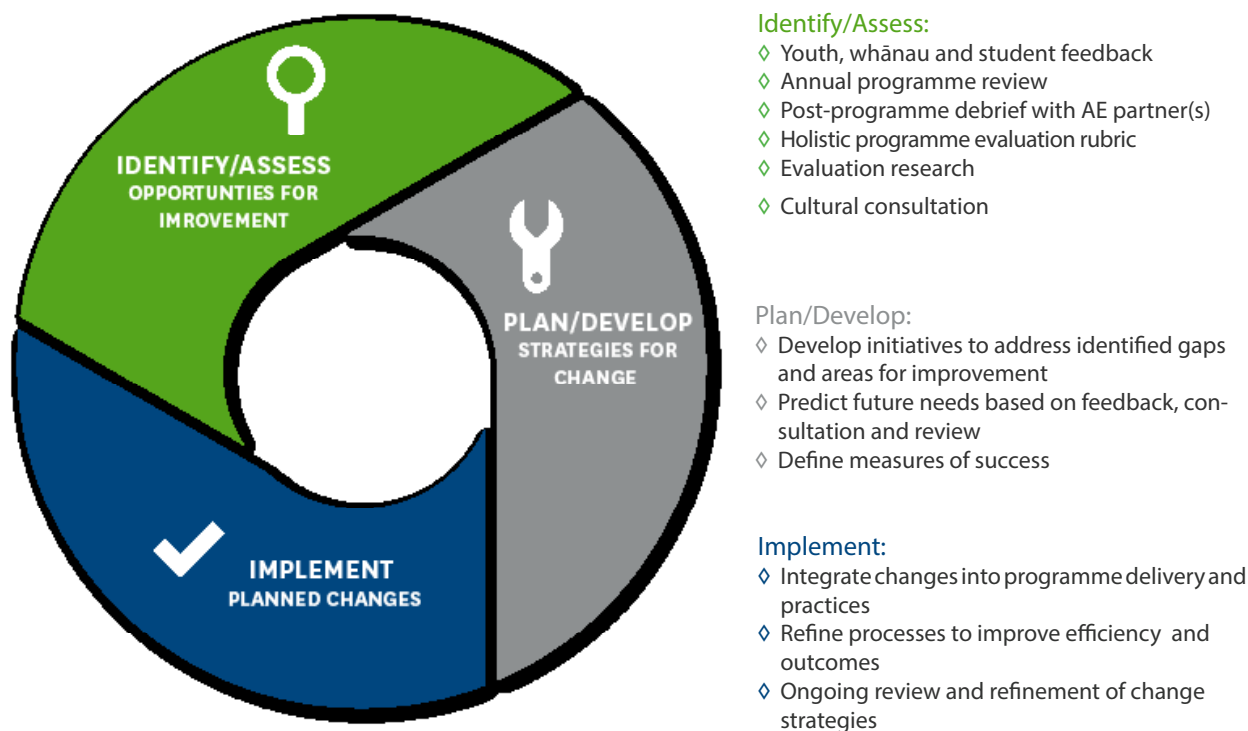
Graph represents the activities of students participants at 12 months post-programme.



*Numbers exceed 100% as some students are engaged in multiple activities.

Continuous Improvement Process

The CC-A leadership team makes design and delivery decisions based on regular programme review and evidence obtained via the sources and mechanisms listed below:



Changes implemented in 2021 following feedback, consultation and review:

- Appointed a Youth and Whānau worker to help strengthen our connections with our young people and their whānau, and further nurture our culturally responsive practice skills.
- We have doubled our delivery contact hours with our ākonga by offering two delivery cycles (one in Terms 1 and 2 and another in Terms 3 and 4).
- We have increased our community partners to include Auckland City Education Services (ACES) Mangarei and Maungawhau.
- Developed a comprehensive database of educational resources which have been organised into curriculum learning areas to assist student practitioners in working effectively with youth mentees on youth mentee defined goals and social, emotional, and educational development needs.

Our Governance Board



From left to right: Mark Barrow, Kelsey Deane, Pat Bullen, Sabrina Zoutenbier, Cherie Appleton, Riddhi Gandhi, Scott Samson, Marcia Matthews, Kate Anderson

Board members

Kate Anderson, Former GM Graeme Dingle Foundation, Experienced NFP Trustee

Cherie Appleton, Social Work Programmes Practice Leader, Faculty of Education and Social Work

Mark Barrow, Dean of Faculty of Education and Social Work (Chair of the Board)

Pat Bullen, CC-A Co-Director, Youth Development Expert, Faculty of Education and Social Work

Kelsey Deane, CC-A Co-Director, Youth Development Expert, Faculty of Education and Social Work

Riddhi Gandhi, Finance Representative, Faculty of Education and Social Work

Te Kawehau Hoskins, Associate Professor, Te Puna Wananga, Faculty of Education and Social Work

Marcia Matthews, Experienced AE Practitioner

Scott Samson, Director of Waitakere Alternative Education Consortium

Sabrina Zoutenbier, Counselling Programmes Practice Leader, Faculty of Education and Social Work

Our Staff



From left to right: Kelsey Deane, Pat Bullen, Kiri Wilder; not pictured - Sua Arona, Sue Caiger

Executive staff

Pat Bullen, Co-Director
 Kelsey Deane, Co-Director
 Kiri Wilder, Case Manager
 Sua Arona,
 Youth & Whānau Worker
 Sue Caiger,
 Operations Assistant

Consultants/advisors

Cherie Appleton,
 Social Work Advisor
 Nan Wehipeihana,
 Evaluation Advisor and Māori
 Cultural Guide
 Sabrina Zountenbier,
 Counselling Advisor

Our partners

ACES Maungarei
 ACES Maungawhau
 WAE Hub
 Waitakere Alternative Education
 Consortium



Campus Connections Aotearoa | Tūhono Aiopīpī

Faculty of Education and Social Work
The University of Auckland
Private Bag 92601
Symonds Street
Auckland 1150
New Zealand

021 262 9363
020 464 9363

campus.connections@auckland.ac.nz
www.campusconnections.ac.nz

Campus Connections Aotearoa is delivered under license and in partnership with Colorado State University.

Campus Connections Aotearoa acknowledges the past and present support of:

Badger Communications Ltd
Foundation North
Ministry of Education
Ministry of Social Development
Ministry of Youth Development
New Zealand Lottery Grants Board
Sport Auckland
The University of Auckland
Vodafone New Zealand
Vodafone New Zealand Foundation
Private donors

