



Campus Connections Aotearoa

Tūhono Aiopīpī



Annual Review 2017



THE UNIVERSITY OF
AUCKLAND
Te Whare Wānanga o Tāmaki Makaurau
NEW ZEALAND

Enriching lives through youth mentoring

Contents

Message from the Dean of the Faculty of Education and Social Work	3
Message from the Directors	5
Programme overview	7
What makes Campus Connections Aotearoa unique?	8
Programme structure and timeline	10
Greater support for youth in alternative education is needed	12
Our alternative education partners	12
What our alternative education partners say	13
Profile and experiences of youth who participated in the programme	15
Profile and experiences of the students who participated in the programme	17
Major accomplishments	18
Campus Connections Aotearoa evaluation and research process	20
Our people	22

Whakataukī

Campus Connections Aotearoa Tūhono Aiopīpī

Mā te rongō ka mōhio	<i>Listening brings about awareness</i>
Mā te mōhio ka mārama	<i>Awareness brings forth understanding</i>
Mā te mārama ka mātau	<i>Understanding enhances knowledge</i>
Mā te mātau ka ora	<i>That knowledge promotes well-being</i>

The above whakataukī was gifted to Campus Connections Aotearoa by the Kāhui Raukura Reo Māori Alumni Committee, who support the revitalisation of Māori language at the Faculty of Education and Social Work. It is intended to support the te reo name for Campus Connections Aotearoa, which was informed by ideas gathered from young people who participated in the programme. Feedback was collected by PhD candidate Yvonne Ualesi, as part of her research on culturally responsive youth mentoring. She conducted focus groups with youth mentees and with their alternative education (AE) tutors. Both groups were asked what kinds of words and ideas should be captured in a te reo name for the programme based on their programme experiences.

The name Tūhono Aiopīpī refers to the importance of connection, nurturing, balance and wellbeing in allowing young people to flourish. The Campus Connections Aotearoa Leadership Team is incredibly grateful for the contributions of everyone who was involved in the naming process and gives special thanks to Te Rongopai Morehu for suggesting both the name and the whakataukī. The Leadership Team feels very blessed to have been gifted with a name that so aptly captures the aspirations of the programme.



Message from the Dean of the Faculty of Education and Social Work

It is a pleasure to present the first Annual Review of Campus Connections Aotearoa – Tūhono Aioipī on behalf of the Governance Board.

As the report attests, the work undertaken by the Campus Connections Aotearoa team is inspiring. It is work that clearly aligns with the aspirations of its host institution in supporting the University of Auckland's strategic priorities to advance the social wellbeing of people in Auckland and the Faculty of Education and Social Work's vision to lead learning that changes lives.

Campus Connections Aotearoa is an innovative youth mentoring scheme providing young people enrolled in alternative education in West Auckland mentoring from university student mentors, counsellors, and social workers from the Faculty of Education and Social Work. At the same time as developing valuable skills that will help our students to work more effectively with young people, the programme also provides a service that supports the positive development of young people in alternative education.

Campus Connections Aotearoa launched in July 2017, inspired by the Campus Connections initiative at Colorado State University in the United States. Auckland UniServices Ltd (a subsidiary of the University) obtained a licence to use the Campus Connections model, which has been adapted to the Aotearoa New Zealand context. We have also been able to create an ongoing research partnership with Colorado State University.

The programme would not be possible without the valued support of our funders The Vodafone New Zealand Foundation, Vodafone New Zealand, The Fletcher Trust and the Ministry of Youth Development.

The Governance Board and I look forward to contributing to the continued success of this important work and watching the programme grow in the coming years.

ASSOCIATE PROFESSOR MARK BARROW
Dean of the Faculty of Education and Social Work





Message from the Directors

It has been such an exciting and rewarding year for us at Campus Connections Aotearoa. This year was our very first year of delivery and we had the absolute pleasure of meeting and walking alongside 22 fantastic young people in alternative education (AE). Their positivity, talent, and potential were inspiring and reinforced our desire to work in this space.


We were equally inspired by the commitment and dedication of our 25 students including 19 mentors, 4 mentor coaches and 2 postgraduate counselling students. It was amazing to watch both the youth and our students flourish and grow as a result of this experience.

We were also incredibly grateful for the support and positive feedback that we received from our community partners – the Waitakere Alternative Education Consortium, Achieving@Waitakere, SENZ and Te Ukaipo, and their AE tutors.

Thank you for believing in us and trusting us with your young people. Although there were many highlights, one that stands out was hosting 45 of the youth's whānau at the graduation. The positive feedback we have received from all those involved has been humbling and has certainly strengthened our resolve to deliver an evidence-informed programme guided by the principles of positive youth development.

Finally, we are incredibly thankful for our small but amazing management team and the numerous individuals and organisations who have supported us in various ways throughout the year. Our work would not have been possible without your support. We look forward to welcoming the next cohort of youth, their whānau, and our students in 2018.

PAT BULLEN and KELSEY DEANE
Directors, Campus Connections Aotearoa



"Campus Connections is a welcoming place. They help you, teach you new things. They taught me how to communicate with other people. For me I'm not that type of, like, talkative type of person. So it was really good to finally talk to other people. My mentor's really cool, funny and just a cool person. We're really close. That's what it's all about – connecting with each other."

"It's [Campus Connections] inspiring because whatever you want to do in life, they'll help you."

Liam, age 15, alternative education student and Campus Connections Aotearoa mentee in 2017.

Programme overview

Campus Connections Aotearoa is an evidence-informed youth mentoring programme that operates at the University of Auckland's Epsom Campus in Semester 2 each year. Youth, aged 13-16 years and enrolled with an AE provider, are invited to participate in the mentoring programme. University of Auckland students enrolled in a therapeutic youth mentoring course are trained as mentors, paired one-to-one with the youth participants, and supervised by a more experienced student mentor coach.

Approximately 18-25 youth (mentee) and student (mentor) pairs and 4 mentor coaches participate in Campus Connections Aotearoa to form a therapeutic mentoring community. Student counsellors are also part of the mentoring community and available during the programme to provide extra support for each young person when needed.



Young people have opportunities to interact with each other in a safe, supportive, and fun environment. Students have opportunities to develop important skills with the support of an experienced team of professionals and a community of peers.

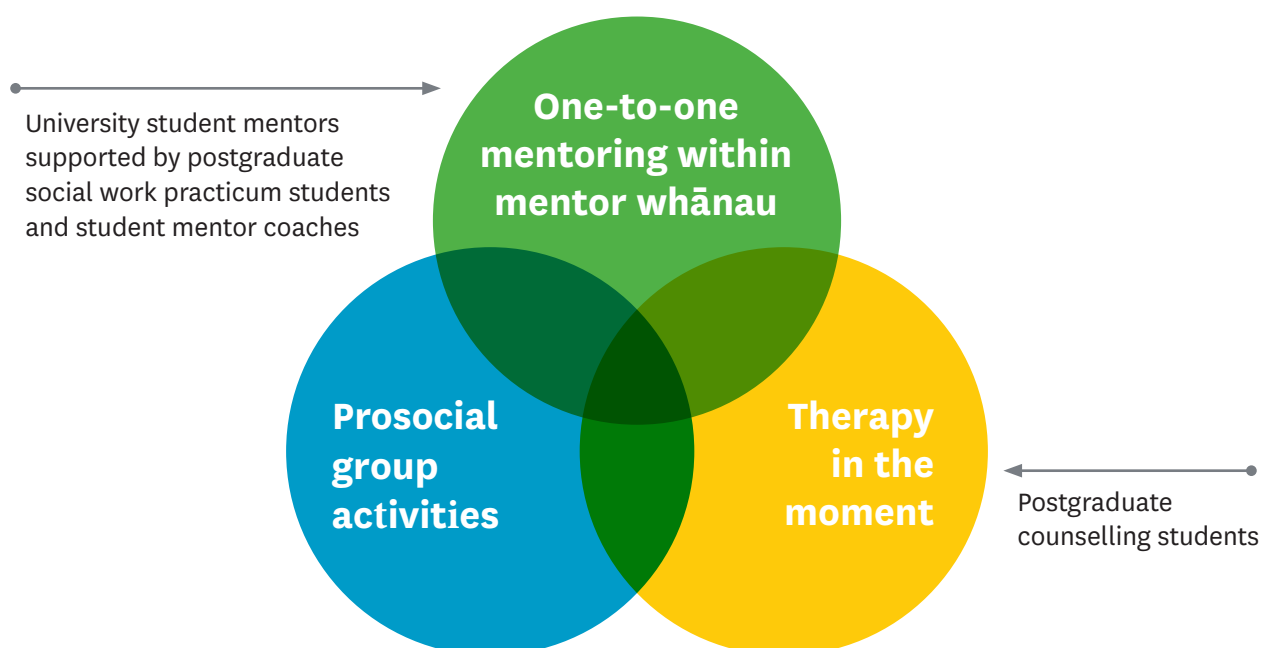
We outline below what a typical day at Campus Connections Aotearoa looks like.

9.30–10:30am	Therapeutic Youth Mentoring Lecture
	Key theory and youth mentoring concepts are presented and discussed for direct application to practice in the coming mentoring session
10:30–11am	Walk and Talk
	Youth arrive and take a 30-minute walk on the University of Auckland campus with their mentor
11am–12pm	Supporting Transition Success
	Mentor-mentee pairs work on youth identified transition plans and personal goals
12–12:30pm	Whānau-style Lunch
	Youth and mentors enjoy a shared meal provided by Campus Connections Aotearoa
12:30–1.30pm 1:30–2.30pm	Pro-social Activities
	Mentor-mentee pairs participate in activities (e.g., educational, sports, music, art) with other Campus Connections Aotearoa youth and student participants
2:30–3:30pm	Group Debrief and Programme Administration
	Mentees depart at 2:30pm. Mentors, student counsellors, and programme leaders engage in a debrief to discuss personal highs and lows from the day's session to provide support and guidance around working with the youth participants



What makes Campus Connections Aotearoa unique?

Campus Connections Aotearoa combines strategies known to be effective under some conditions while mitigating the recognised risks associated with each standalone component.



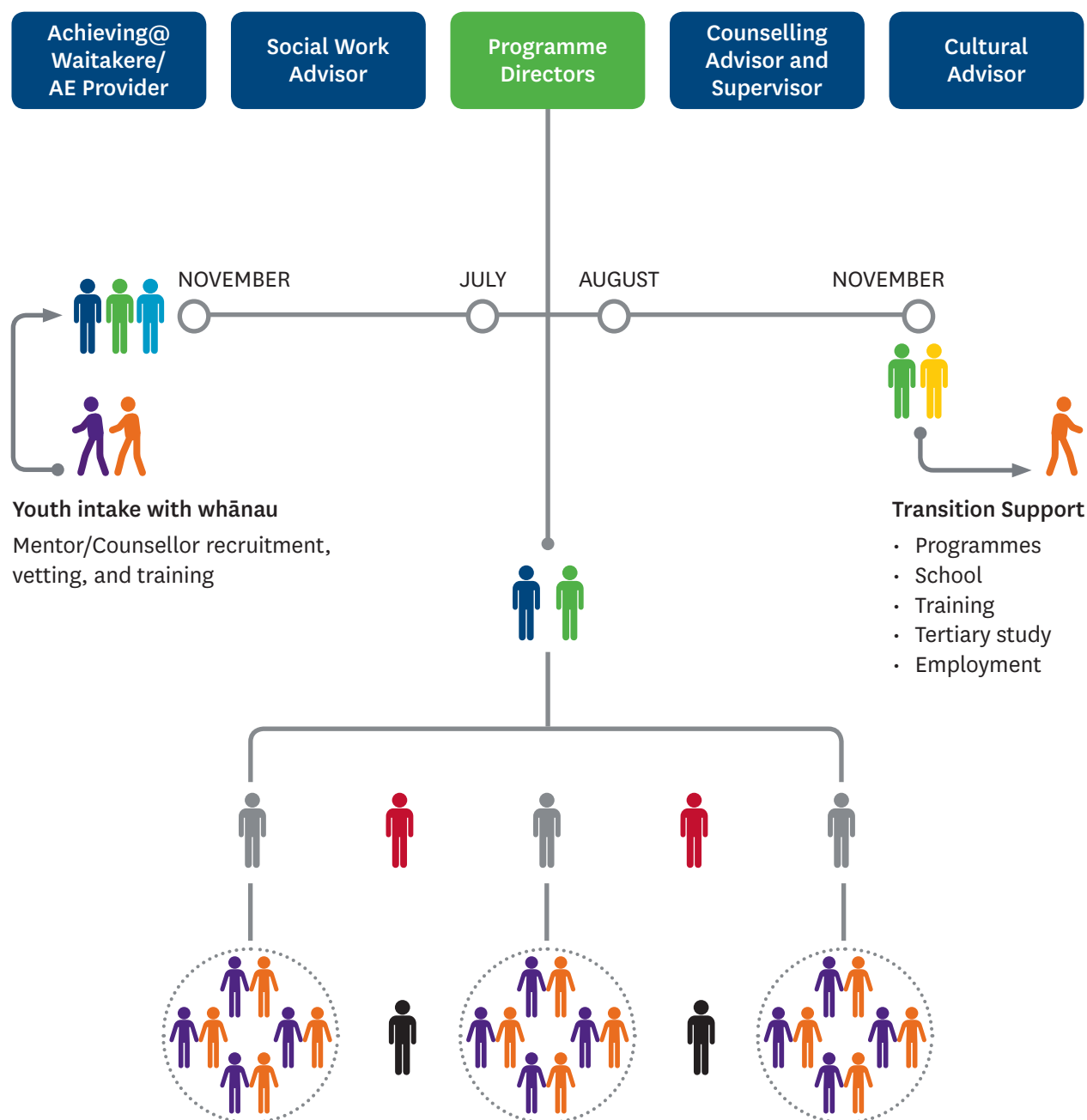
A powerful multi-level therapeutic mentoring programme designed to help support young people with complex needs



"It's a rewarding experience. You get to work with young people and you get to build connections. When you come to the end of the programme some are best friends – me and my mentee, we can't stop talking! [Campus Connections] has had a huge impact on the young people from what we've seen and what they've told us. I think that's the most rewarding part of it. You actually put all the stuff you've studied into practice. Also, you get to make a huge impact on a young person's life. And they make a huge impact on your life as well, and you wouldn't know it unless you do it!"

Peter, age 22, Bachelor of Social Work student and Campus Connections Aotearoa mentor in 2017.

Programme structure and timeline





Greater support for youth in alternative education is needed

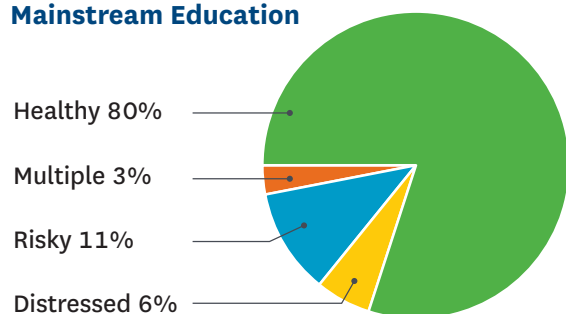
Alternative education (AE) is a short-term intervention which supports students who have been alienated from mainstream education. It re-engages students in a meaningful learning programme targeted to their individual needs and supports them to transition back to mainstream school, further education, training, or employment. Many AE students present with complex issues and multi-faceted challenges.

These may include but are not limited to histories of trauma, abuse and neglect; previously undiagnosed mental health issues or learning difficulties; high levels of truancy and transience; extensive alcohol and drug use; intergenerational poverty and homelessness; and involvement with care and protection and youth justice agencies (Waitakere Alternative Education Consortium, 2018, personal communication).

New Zealand research has shown that young people in alternative education are

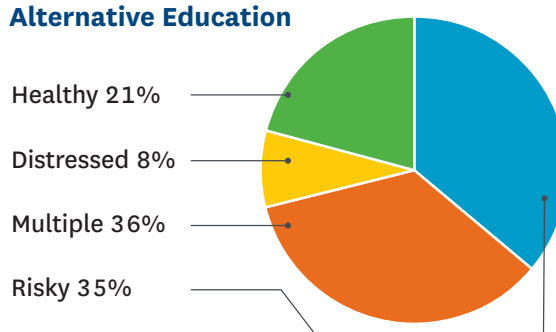
10 X more likely than students in mainstream education to fall within a “Multiple” risk profile whereby youth engage in a high rate and range of risk behaviours while also experiencing high rates of emotional distress:

Mainstream Education



Note. “Healthy” youth report few problems with risk behaviours and emotional distress; “Distressed” youth report high levels of emotional distress but low engagement in risk behaviours; and “Risky” youth engage in high levels of risk behaviours but report low emotional distress.

Alternative Education



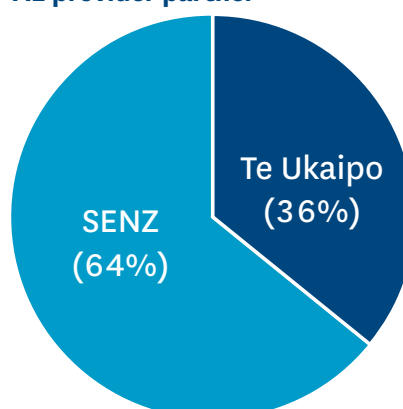
Source: Noel, H., Denny, S., Farrant, B., Rossen, F., Teevale, T., Clark, T., Fleming, T., Bullen, B., Sheriden, J., & Fortune, S. (2013). Clustering of adolescent health concerns: A latent class analysis of school students in New Zealand. *Journal of Paediatrics and Child Health*, 49(11), 935-941. doi: 10.1111/pc.12397

Our alternative education partners

The Waitakere Alternative Education Consortium (WAEC), on behalf of Green Bay High School, manages the AE contract for West Auckland. WAEC currently have five subcontracted AE providers. WAEC works closely with the Achieving@Waitakere Charitable Trust (A@W) through a Collective Impact Initiative aimed at improving educational outcomes for young people in West Auckland. A@W is a charitable trust set up by secondary school principals of West Auckland to improve educational outcomes for young people, particularly youth considered at-risk in the Waitakere region.

In 2017, Campus Connections Aotearoa partnered with WAEC as part of the A@W Collective Impact Initiative to provide additional opportunities to young people in AE to address the dire needs within this sector. The youth who participated in Campus Connections Aotearoa were enrolled with two of the five providers managed by WAEC.

% of Campus Connections Aotearoa youth enrolled with each AE provider partner



What our alternative education partners say

AE Tutors who participated in Campus Connections Aotearoa in 2017 said:

"Like, for me personally I have learnt from the mentors as well, just how they approach the students..."

"...I think one of the first goals that we achieved was after the first week, like as soon as we jumped back in the van most of the boys were talking about university, like oh I want to go to Uni now, you know."

"That was cool being in an environment like this for them... I love that every Wednesday these guys are passionate about it and you know the students walk in the door and their arms are wide open and they are getting them in."

Statement from Scott Samson, Director of the Waitakere Alternative Education Consortium:



As a team WAEC decided to build on our initial success by bringing outside agencies into our space so our students would be able to gain access to services they would not have otherwise

engaged with. I see our engagement with Campus Connections Aotearoa as an expansion and extension of that work. Building strong pro-social relationships and obtaining skilled mentoring are essential tools in facilitating the transition of our students to further education, training, or employment so when we were approached to partner with Campus Connections we enthusiastically seized the opportunity.

From our perspective the first year of Campus Connections has been hugely successful. We have seen an increase in both attendance and engagement from students who have been involved in the pilot. Strong bonds and positive relationships have been developed between students and mentors. The mentors have assisted the students with setting goals for the future and dealing with challenges along the way. The programme has opened our students' eyes to future directions and opportunities that they may not have otherwise considered. It has also increased the university students' knowledge and understanding of the youth in our space, both their potential and the challenges that they face. One of the Campus Connections student counsellors has even offered to continue to work with WAEC students on a pro bono basis beyond the confines of the pilot.

We look forward to building on this success with Campus Connections in 2018.

At the end of 2016

10% of young people enrolled with a West Auckland AE provider went on to further learning or employment opportunities

By the end of 2017

56% of young people enrolled with a West Auckland AE provider went on to further learning or employment opportunities



Youth who participated in Campus Connections Aotearoa in 2017 said:

"I feel more confident about myself and I am now letting my feelings out to people I trust ... I have learned to achieve my goals and that education is a good opportunity for your life."

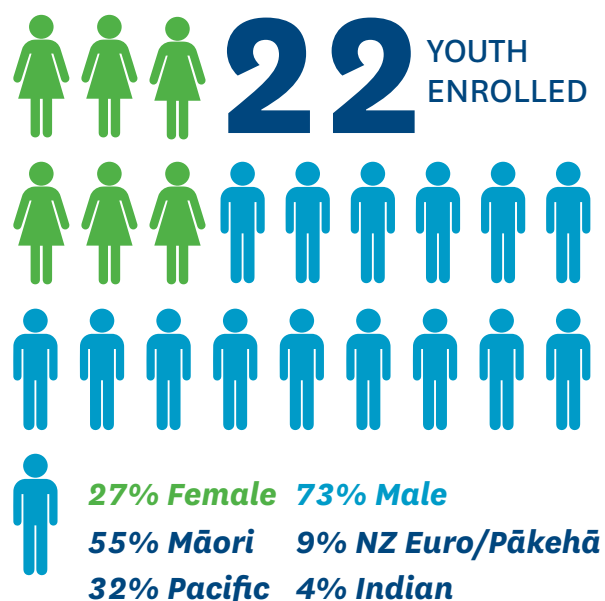
"[Campus Connections] helped me see what I want to do in the future and how I want to be towards myself."

"I really enjoyed the journey I have spent here at Campus Connections ... The activities have given me a lot of confidence [and] skills because I remember coming here on my first day, I was probably the quietest one in the room."

"I liked ... learning more about my Māori side."



The profile and experiences of youth who participated in the programme were as follows:



Participants were aged:



% of Youth reporting improvements due to taking part in the programme:

100% capability and/or resilience

85% communicating with others

85% feeling more confident

77% understanding other people

77% feeling positive about the future

77% making friends and connections

62% feeling good about themselves

90%

RETENTION TO THE END OF THE PROGRAMME

88%

ATTENDANCE AT 12 SESSIONS

92%

were happy or very happy

WITH THE PROGRAMME AND THE PEOPLE RUNNING IT



It is important to note that the youth photos contained in this report are not representative of the youth who took part in the programme in 2017. Overall there were more males in the programme, yet only female participants provided parental consent and individual assent to participate in the professional photo shoot.



Students who participated in Campus Connections Aotearoa in 2017 said:

"It makes me feel good to be a mentor. It gives me a sense of fulfilment where I am able to work with my mentee. Giving back to the community through youth is a great feeling."

"I really enjoyed the positive environment that Campus Connections Aotearoa provided ... It also gave me a lot of different opportunities to grow, especially in my communication and interpersonal skills."



The profile and experiences of the 25 students who participated in the programme were as follows:

25 STUDENTS
(19 mentors,
4 mentor coaches,
2 counselling students)



84% Female 12% Male

4% Gender Diverse

8% Māori

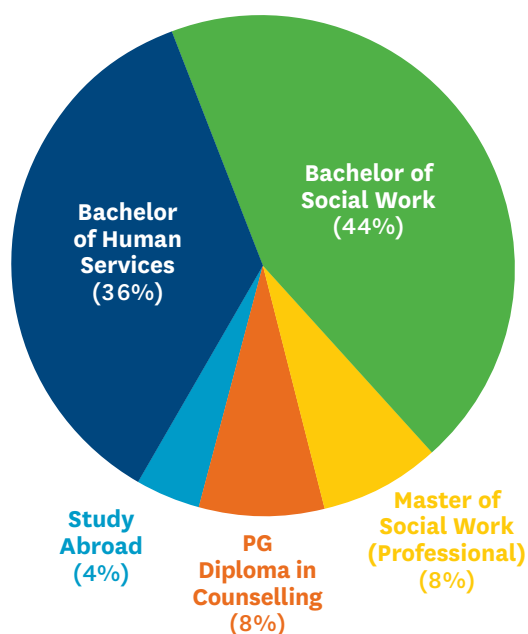
36% NZ Euro/Pākehā

36% Pacific 4% Indian

8% Asian

4% Other European

4% Other



95% attendance at 15 sessions (3 training days and 12 classes/sessions)

% of students reporting improvements due to taking part in the programme:

100% capability and/or resilience

100% understanding other people

91% communicating with others

82% feeling more confident

82% making friends and connections

82% helping people in your local community

64% managing or organising themselves

91%
were happy
or very happy

WITH THE PROGRAMME



100%
were happy
or very happy

WITH THE PEOPLE RUNNING IT





Major accomplishments

As our first delivery cycle, 2017 was a busy year for Campus Connections Aotearoa. Here are some of our major accomplishments.

- MSD Level 3 Social Sector Accreditation (pending site audit)
- Consolidated close relationships with several community partners including, Achieving@Waitakere Collective Impact Project, Waitakere Alternative Education Consortium and Two AE providers: SENZ and Te Ukaipo
- Developed and implemented an extensive programme of research to support cultural adaption and programme evaluation
- Successful pilot delivery with positive feedback from all stakeholders – mentors, youth and their whānau, AE tutors, and leaders
- Provided intensive mentoring, therapeutic support, and prosocial opportunities to 22 young people in AE
- Contributed to the professional development of 25 tertiary students
- Established an experienced, diverse, and skilled Governance Board
- Growing recognition and expansion into other academic programmes at the University of Auckland



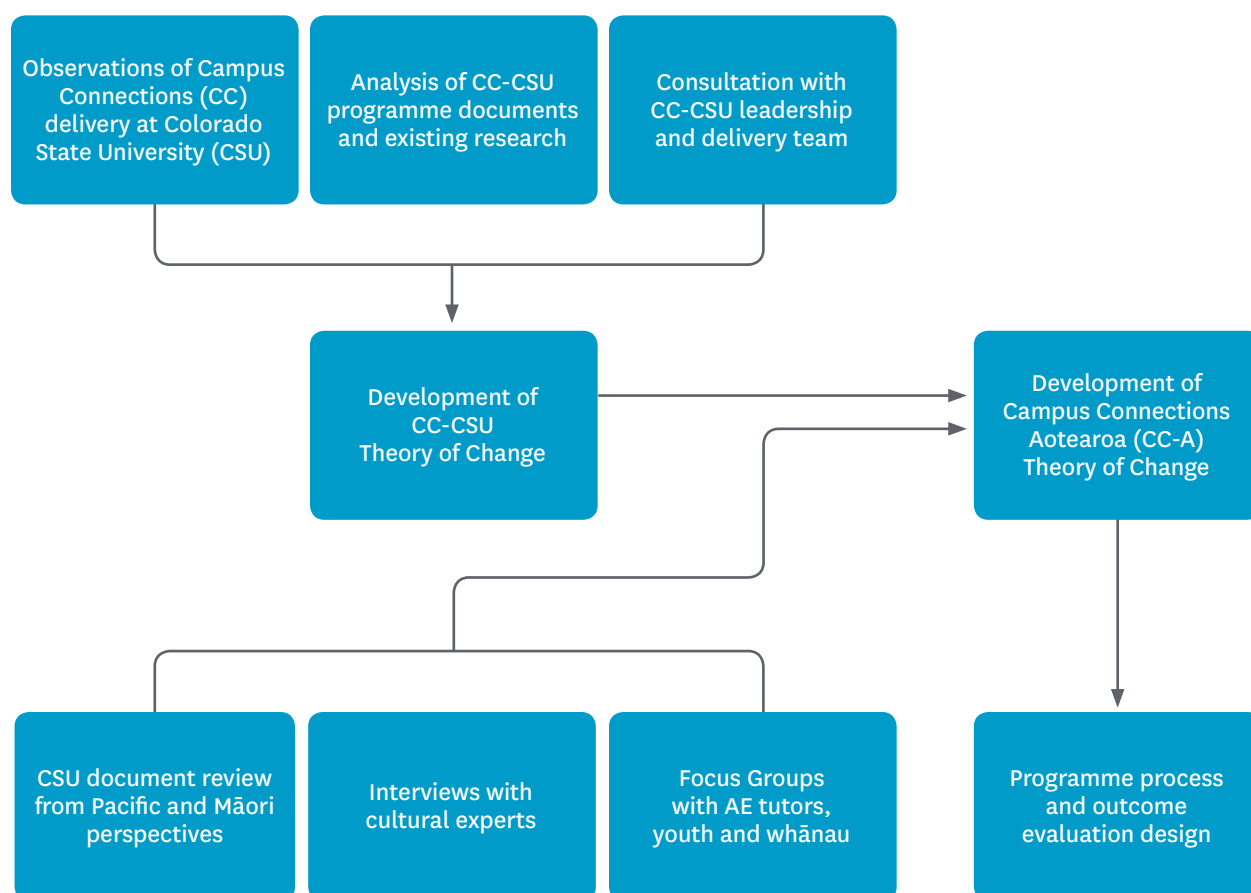
"Campus Connections was an awesome experience. I gained a lot, as did many of the youth and their mentors too. It was great to see the relationships develop between mentors and mentees and to witness this grow each week. For some of our most vulnerable young people, this programme offered them a support network and the connectedness many were missing. Counselling 'in the moment' proved challenging sometimes without more time available to develop strong therapeutic bonds; however, it was very rewarding seeing positive gains made with the youth involved. It was a valuable experience, one I'm grateful for."

Mindi Moore, Postgraduate Diploma in Counselling Theory student and Campus Connections Aotearoa student counsellor in 2017.

Campus Connections Aotearoa evaluation and research process

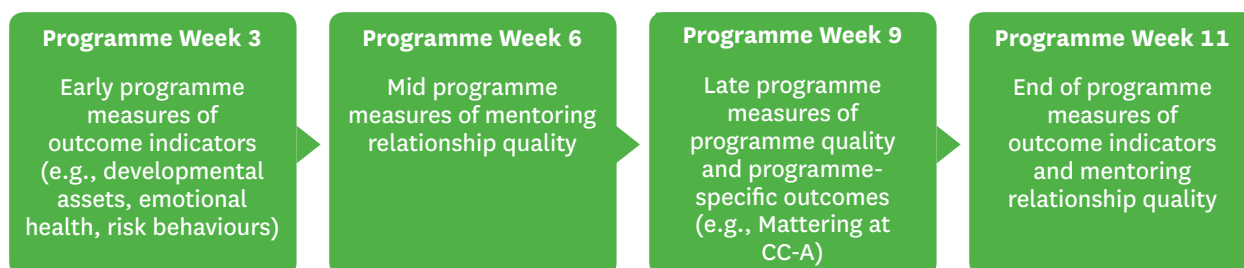
Campus Connections Aotearoa is committed to evidence-informed practice. The Leadership Team draws on existing research and evidence to inform programme design, development, training, and education. With support from consultants, advisors, and research students, the team has also implemented an extensive programme of evaluation research to determine programme effectiveness and to produce programme-specific evidence for ongoing improvement efforts. Cultural translation research to adapt the US-based programme model to the Aotearoa New Zealand context and a theory-driven quasi-experimental evaluation of programme processes and outcomes form the two major strands of the research. The research components and process are outlined below according to pre-delivery, delivery, and post-delivery phases.

Phase 1: Pre-Delivery Programme Design

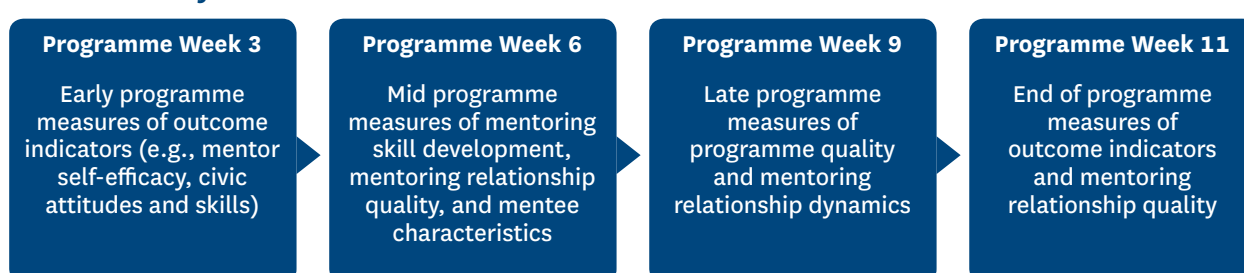


Phase 2: Process and outcome measurement pilot and non-participant observation of programme during delivery

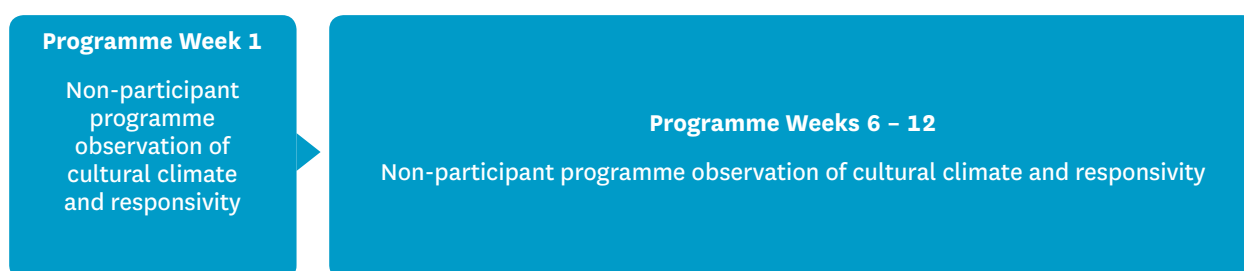
Mentee Survey Measures



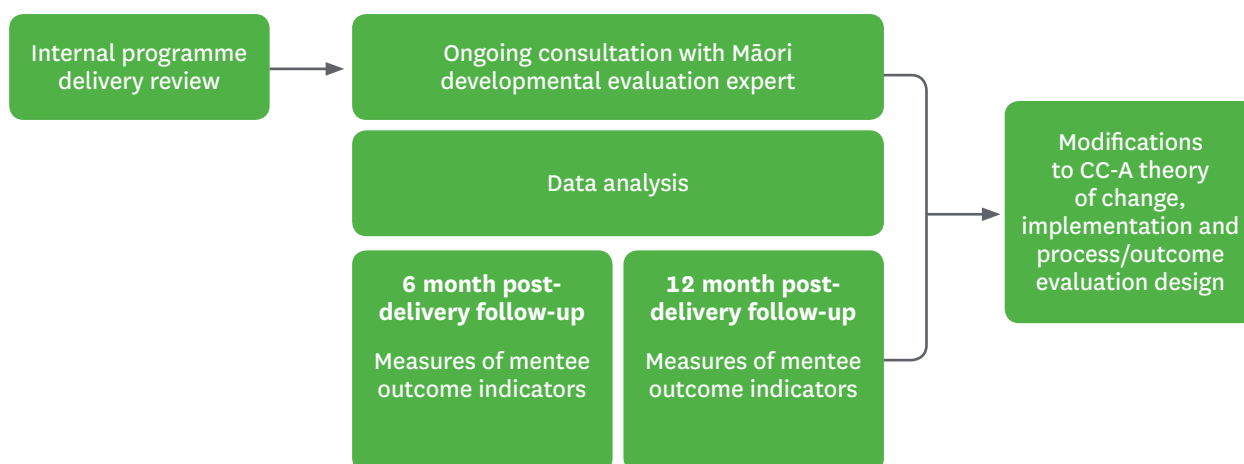
Mentor Survey Measures



Programme observations focused on cultural responsiveness for Māori and Pacific:



Phase 3: Post-delivery review, consultation and outcome measurement follow up



A detailed 2017 Evaluation Report will be available in mid-2018.
Email campus.connections@auckland.ac.nz to obtain a copy.

Our people



From left to right: Marcia Matthews, Mark Barrow, Kate Anderson, Michelle Wang, Cherie Appleton, Kelsey Deane, Scott Samson, Sabrina Zoutenbier, Pat Bullen, Mauna Savea. Absent: Natasha Urale-Baker

Board members

Kate Anderson, Former GM Graeme Dingle Foundation, Experienced NFP Trustee

Cherie Appleton, Social Work Programmes Practice Leader, Faculty of Education and Social Work

Mark Barrow, Dean of the Faculty of Education and Social Work (Chair of the Board)

Pat Bullen, Co-Director, Youth Development Expert, Faculty of Education and Social Work

Kelsey Deane, Co-Director, Youth Development Expert, Faculty of Education and Social Work

Marcia Matthews, Experienced Alternative Education Practitioner

Scott Samson, Director of Waitakere Alternative Education Consortium

Mauna Savea, Campus Connections Aotearoa Mentor 2017

Natasha Urale-Baker, Social Worker, Pasifika Success Mentor, Faculty of Education and Social Work

Michelle Wang, Accountant, Faculty of Education and Social Work

Sabrina Zoutenbier, Counselling Programmes Practice Leader, Faculty of Education and Social Work



From left to right: Kiri Wilder, Kelsey Deane, Pat Bullen, Kate Brookson-Morris

Executive staff

Kate Brookson-Morris,
Programme Administrator

Pat Bullen, Co-Director

Kelsey Deane, Co-Director

Kiri Wilder, Case Manager

Consultants/advisors

Cherie Appleton,
Social Work Advisor

Yvonne Ualesi,
Cultural Advisor, Pasifika

Melinda Webber,
Cultural Advisor, Māori

Nan Wehipeihana,
Evaluation Advisor and Māori
Cultural Guide

Sabrina Zountenbier,
Counselling Advisor

Our partners

- Achieving@Waitakere
- SENZ
- Te Ukaipo
- Waitakere Alternative Education Consortium



Campus Connections Aotearoa | Tūhono Aiopīpī

Faculty of Education and Social Work
The University of Auckland
Private Bag 92601
Symonds Street
Auckland 1150
New Zealand

09 623 8899 ext 48833
021 262 9363

campus.connections@auckland.ac.nz
www.campusconnections.ac.nz

Developed by Colorado State University and adapted by the University of Auckland for the Aotearoa New Zealand context, Campus Connections Aotearoa is delivered under license and in partnership with Colorado State University.

Campus Connections Aotearoa is made possible with the support of:

Badger Communications Ltd
Ministry of Social Development
Ministry of Youth Development
The Fletcher Trust
The University of Auckland
Vodafone New Zealand
Vodafone New Zealand Foundation

