

## THE PROBLEM

### The Future of Work

Universities are charged with preparing their graduates for their future employability, but that **future is unknown**. Current thinking is that our graduates will need a host of **personal and professional capabilities** if they are to thrive in their lives and careers. These **capabilities are captured in universities' graduate profiles**



### The Teaching Challenge

Interviews with **teaching staff** revealed that while they are **committed to preparing student** for their futures they are **unsure about what this means** for their teaching practice. Many interviewees were uncertain how to **teach 'future-ready' capabilities** especially when it involved bringing about **transformative changes in students' thinking and beliefs**



### The Proposal

- Develop an **evidence-based pedagogical framework** for transformational teaching that is **easy to understand and apply**
- Develop **resources to support others** in applying the framework

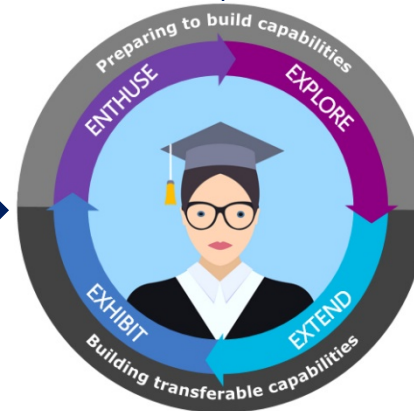
## THE SOLUTION

### The Partnership



### The Project

- **Reviewed the literatures** on transformative learning, the transfer of learning and transformative teaching
- Developed a **simple summary framework** to guide teaching for transformation
- **Developed, tested and iteratively refined** the framework through a series of four studies
- Designed and evaluated a **suite of resources** to support changes in teaching practices
- Delivered a **national programme** of workshops



## RESOURCES

### Reports, Guides & Case Studies

In addition to formal reports and articles, we are preparing short guides and case studies for:

- **Teaching staff**
- **Programme leads**
- **Employers**
- **Co-curricular providers**
- **Students**

### Tools and Resources

Tools, templates and workshop materials will be available for teaching staff and academic developers to support the following:

- Identifying employability capabilities
- Working with the challenges of employability
- Embedding employability in sessions
- Designing courses for transformational teaching and employability
- Embedding employability in programmes and qualifications
- Levelling the employability playing field

## CONTACTS

- Professor Susan Geertshuis ([s.geertshuis@auckland.ac.nz](mailto:s.geertshuis@auckland.ac.nz))
- Dr. Rob Wass ([rob.wass@otago.ac.nz](mailto:rob.wass@otago.ac.nz))
- Tim Watts ([tim@talentwire.co.nz](mailto:tim@talentwire.co.nz))
- Dr Kensington-Miller ([b.kensington-miller@auckland.ac.nz](mailto:b.kensington-miller@auckland.ac.nz))
- Dr Sean Strum ([s.sturm@auckland.ac.nz](mailto:s.sturm@auckland.ac.nz))

- Professor Jennifer Curtin ([j.curtin@auckland.ac.nz](mailto:j.curtin@auckland.ac.nz))
- Professor Helena Cooper-Thomas ([helena.cooper.thomas@aut.ac.nz](mailto:helena.cooper.thomas@aut.ac.nz))
- Professor Gavin Brown ([gt.brown@auckland.ac.nz](mailto:gt.brown@auckland.ac.nz))
- Dr Annette Dunham ([a.dunham@auckland.ac.nz](mailto:a.dunham@auckland.ac.nz))
- Associate Professor Jennifer Lees-Marshment ([j.lees-marshment@auckland.ac.nz](mailto:j.lees-marshment@auckland.ac.nz))

- Brendon Potter ([b.potter@auckland.ac.nz](mailto:b.potter@auckland.ac.nz))
- Narissa Lewis ([narissa.lewis@auckland.ac.nz](mailto:narissa.lewis@auckland.ac.nz))
- Dr. Bernadette Kewstubb ([bernadette.knewstubb@vuw.ac.nz](mailto:bernadette.knewstubb@vuw.ac.nz))
- Peta Moberley ([p.moberley@auckland.ac.nz](mailto:p.moberley@auckland.ac.nz))
- Dr. Qian Liu ([qian.liu@otago.ac.nz](mailto:qian.liu@otago.ac.nz))