

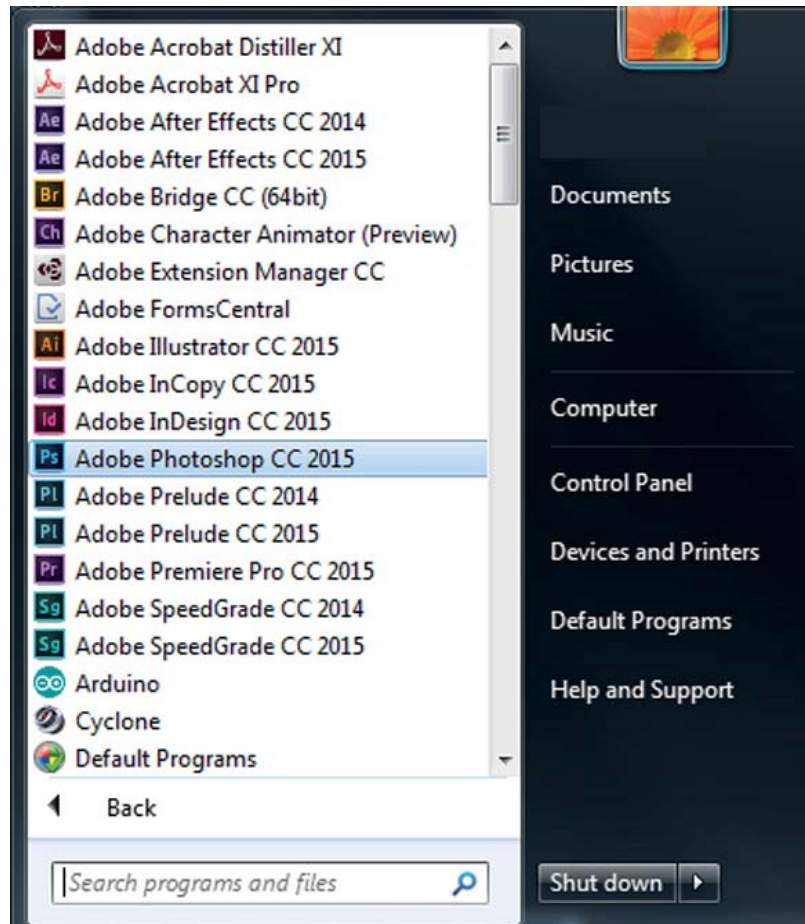
Post processing photoshop basics:

*Architecture visualization is notorious for producing complex and messy PSD files. Properly managing your layers in Photoshop can lead to better efficiency, a more editable file, and in many cases better looking illustrations. This tutorial provides a loose guideline for Photoshop beginners in basics for file management and interface.*

Tutorial Prerequisite

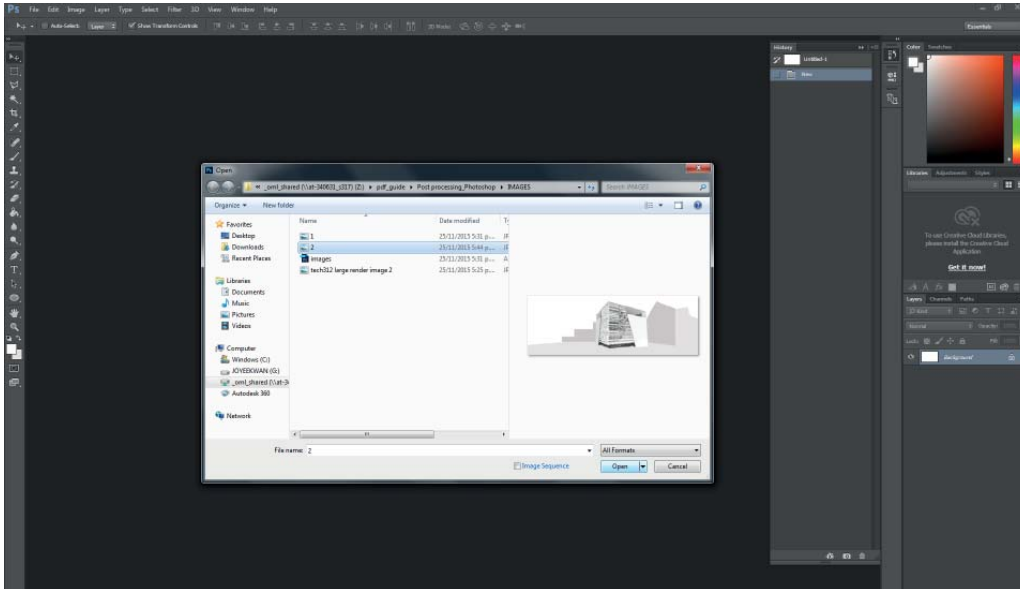
Rendered Image (as base)

1. Open Photoshop	Pg 3
2. Find Base Files	Pg 4
3. Placing Images	Pg 5
4. Layers	Pg 6
5. Groups	Pg 7
6. Differentiation	Pg 8
7. Order	Pg 9
8. New	Pg 10
9. Lock	Pg 11
Example Image	Pg 12



# 1. OPEN PHOTOSHOP

Open Photoshop under Start> All Programs> Adobe Photoshop CC 2015



## 2. FIND BASE FILES

Under **File > Open** dialog box, select **your base render file(s)** and click **OK**.

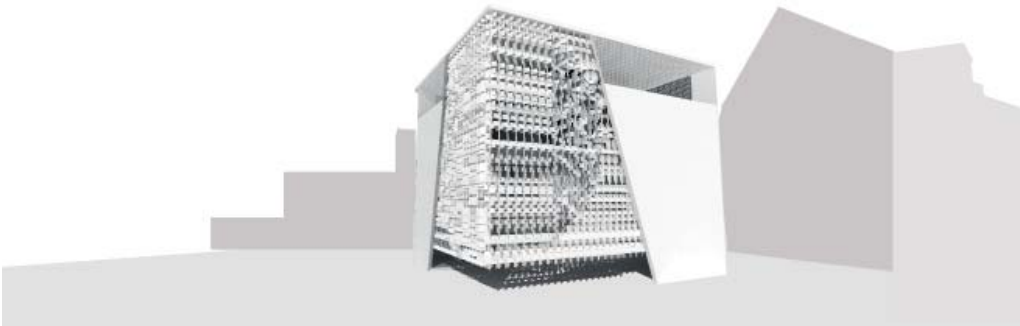
Navigation:

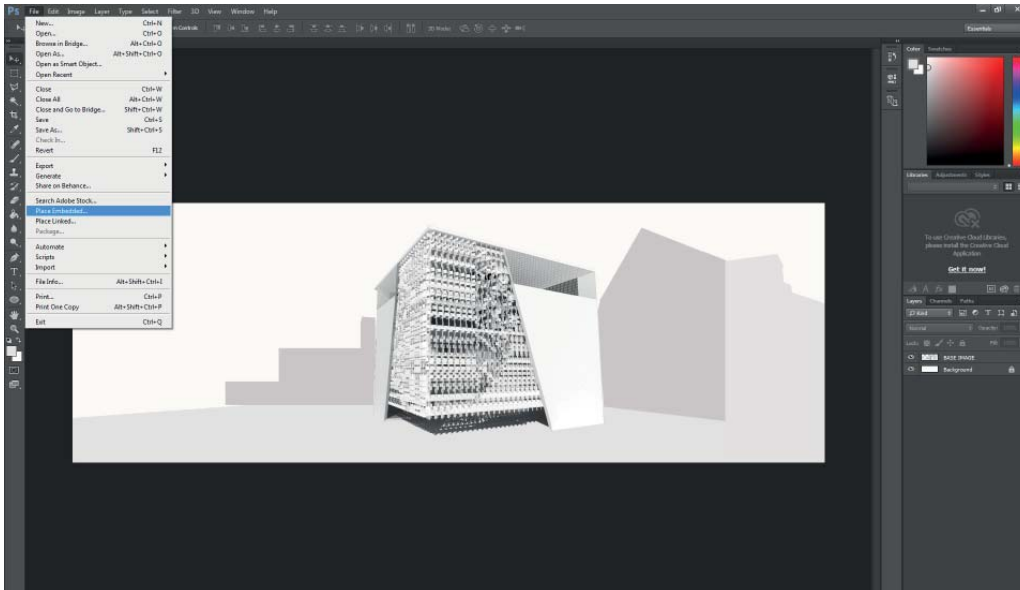
Hold **Alt + Scroll** (up/down) to **ZOOM**

OR

Ctrl **'+'** and **'-'**

Hold **Space** to **PAN**





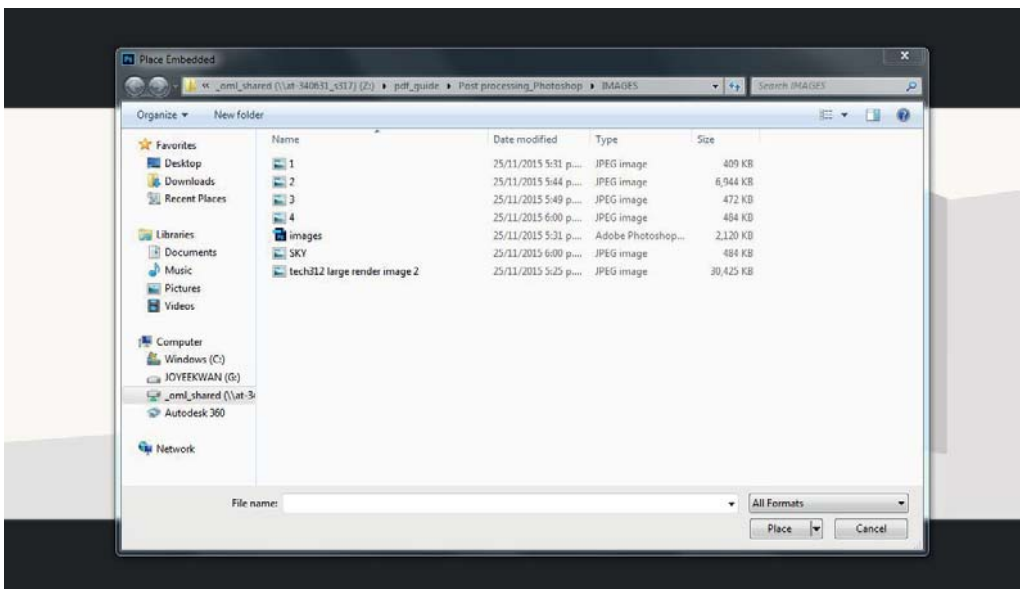
### 3. PLACING IMAGES

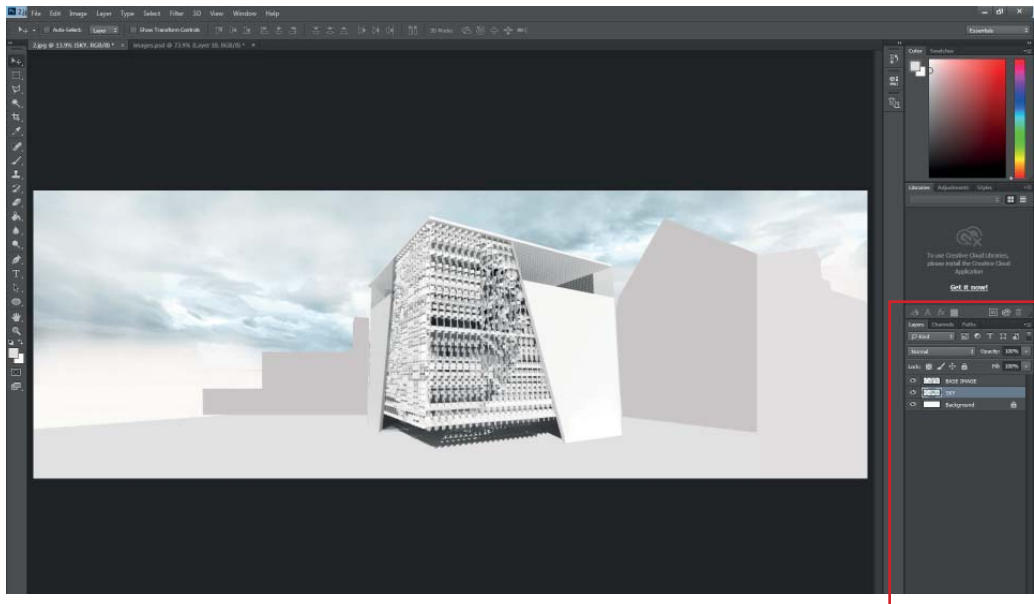
“Place Linked” allows any changes to the image to be updated and is useful if base images often need changing. Because a reference is made to the linked image, files need to be organized so that Photoshop knows where to find the links.

“Place Embedded” creates a copy of the data inside Photoshop so any changes while working within Photoshop will not apply to the original image.

[Place Linked] and [Place Embedded] are in the [File] tab of the main ribbon.

In the dialogue box, choose your image and click [Place].

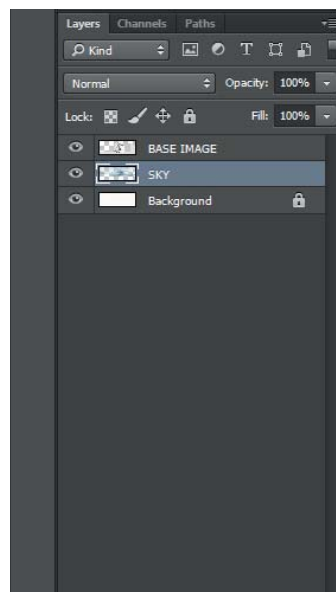


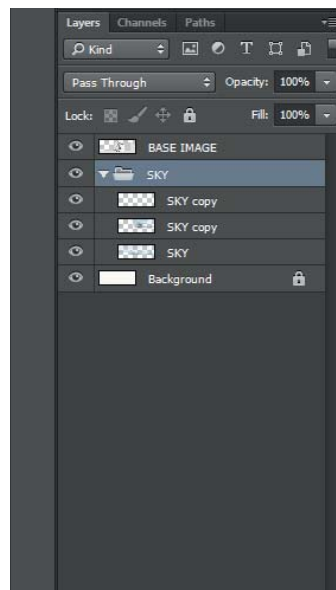
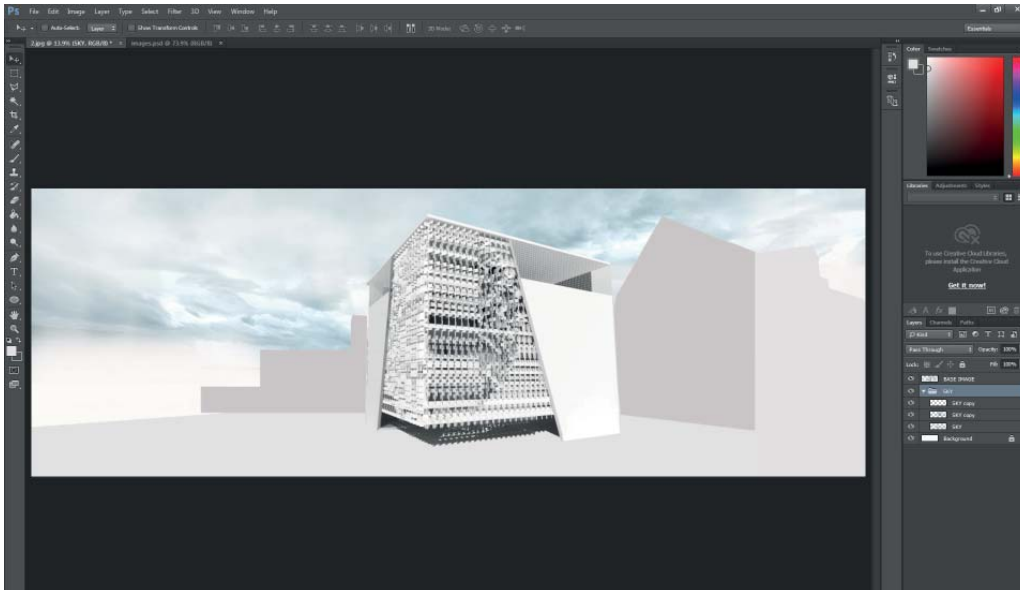


## 4. LAYERS

Photoshop layers are like sheets of stacked acetate. You can see through transparent areas of a layer to the layers below. You move a layer to position the content on the layer, like sliding a sheet of acetate in a stack.

A new image has a single layer. The number of additional layers, layer effects, and layer sets you can add to an image is limited only by your computer's memory





## 5. ORGANISING LAYERS (GROUPS)

You work with layers in the Layers panel. Layer groups help you organize and manage layers. You can use groups to arrange your layers in a logical order and to reduce clutter in the Layers panel. You can nest groups within other groups.

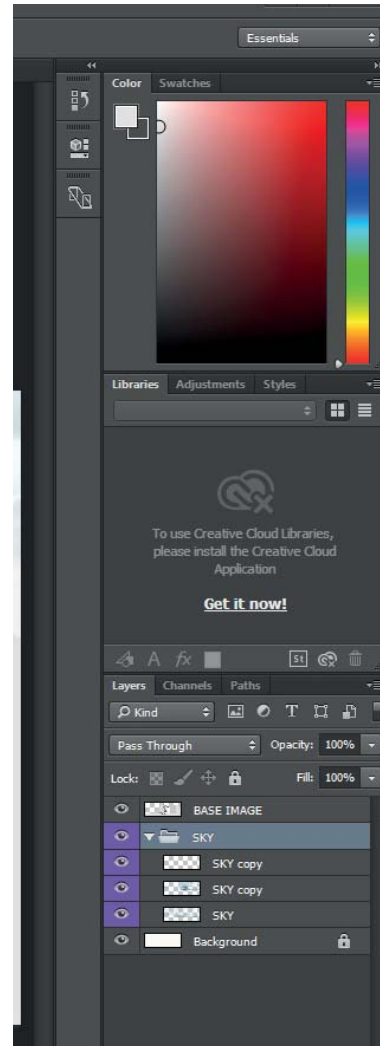
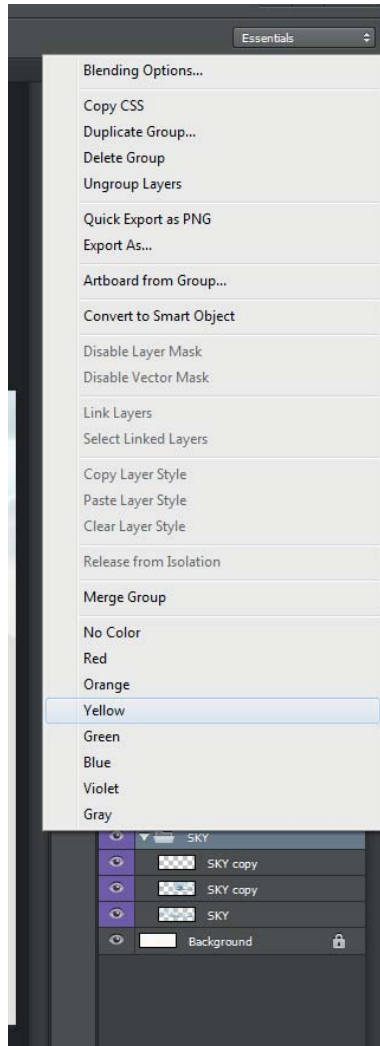
To group: Select layers that you want to group> right click> **[Group from layers]**

OR

Select layers that you want to group> **Ctrl + G**

Note: Layer order may change depending on which layers you group.





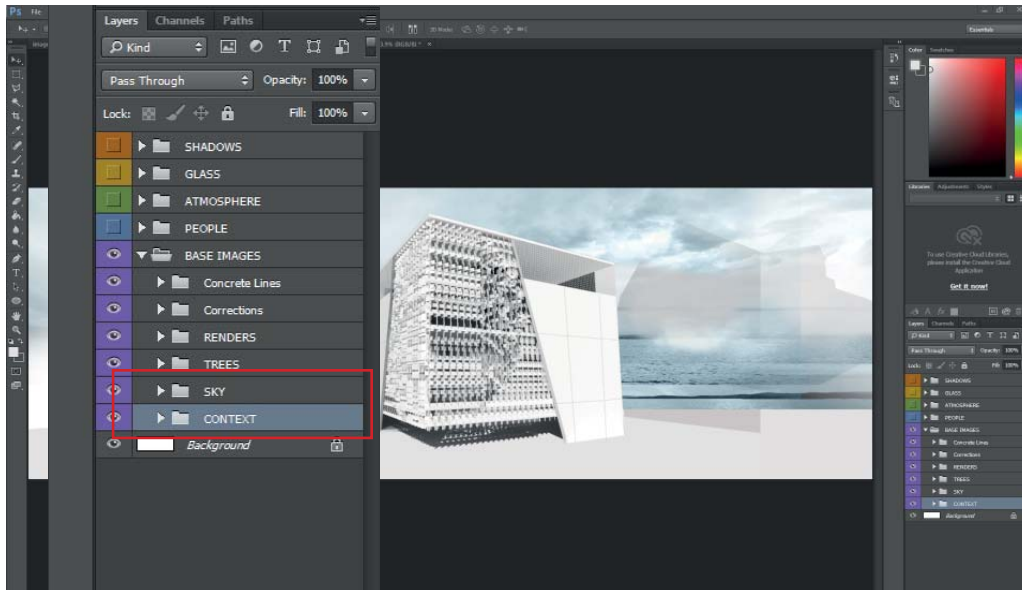
## 6. ORGANISING LAYERS (DIFFERENTIATION)

Naming: Rename your groups or layers to keep track of what you are working on.

To rename: **Double click on layer name**

Colour Coding: Colour code your layers to highlight specific groups

To colour code: Right click > **choose colour**



## 7. ORGANISING LAYERS (ORDER)

Drag to reorder:

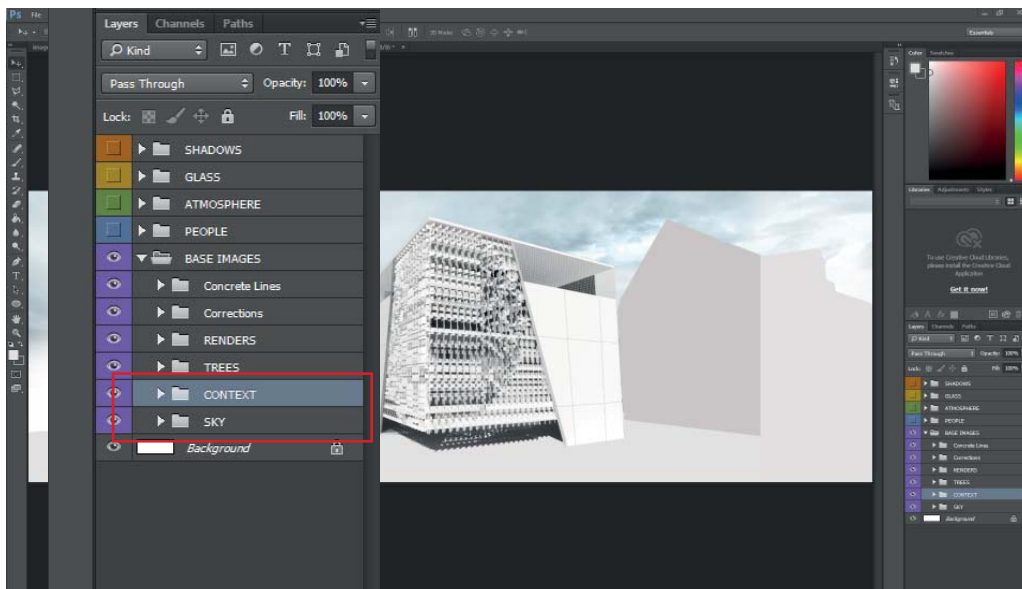
Select layer/group and drag to reorder - layers on top will overlay layers on the bottom

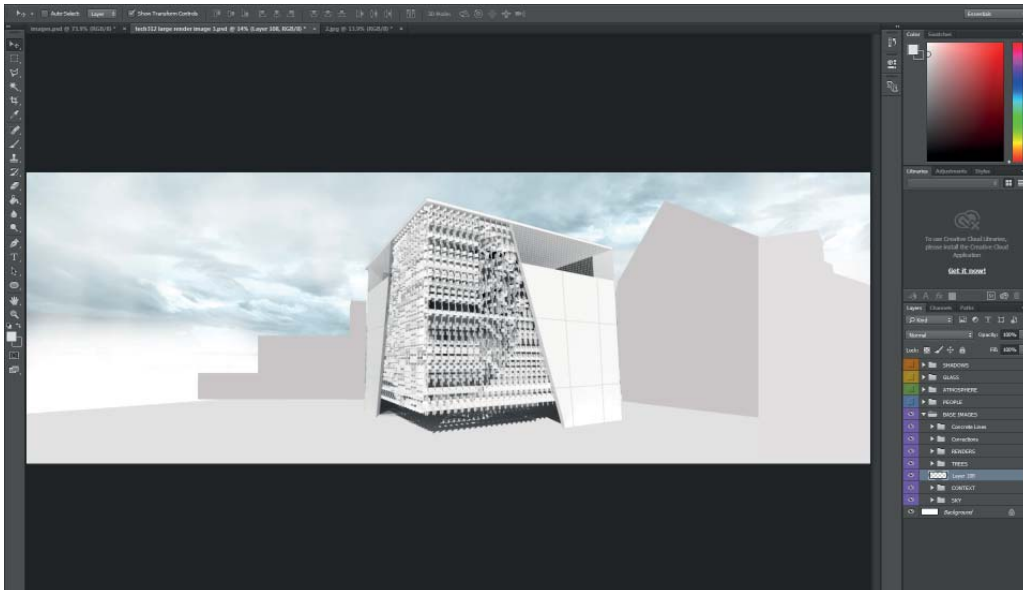
Hide Layer:

To hide one layer, click the eye on the left hand side

To hide consecutive layers, click the eye and drag up or down with mouse

To hide all but one, hold Alt and click the layer you want to view.





## 8. ORGANISING LAYERS (NEW)

To make new layer, navigate to the options ribbon at the bottom of the layers panel> select **[Create new layer]**

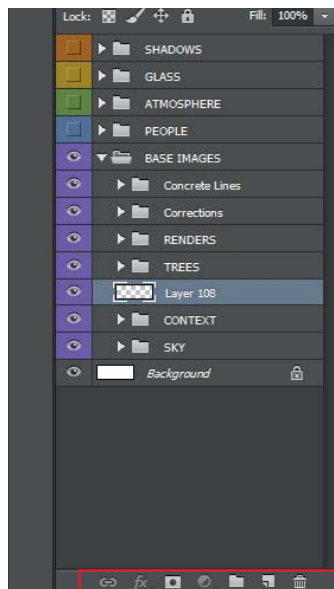
OR

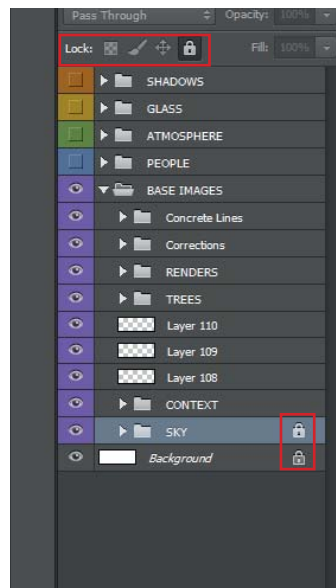
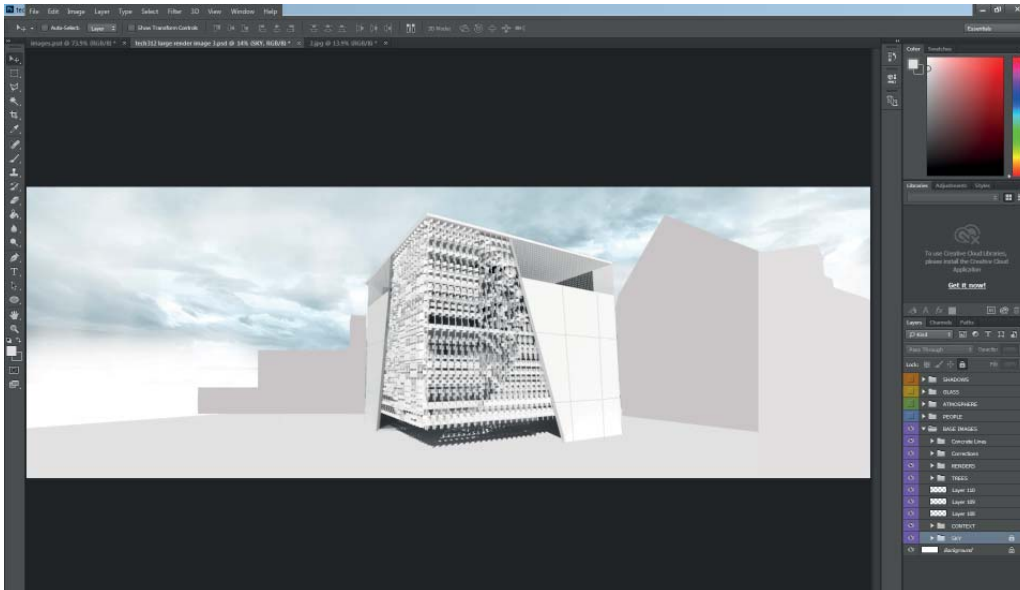
**Ctrl + Shift + N**



Note: This panel will also allow you to create new Adjustment layers, Layer Masks and Groups

For more information regarding Adjustment layers and Layer Masks, refer to [Post processing\\_photoshop\\_2015\\_editing PDF](#)





## 9. ORGANISING LAYERS (LOCK)

To Lock layers:

Select Layer(s)> click Lock button in top ribbon

To Unlock layers:

Select Layer(s)> click Lock button in top ribbon again

OR

Click lock button on layer

