



A Color-Based Hair Detection Technology Using 3D Camera

ETRI-UST
HMI Lab
SeongWoo Park

01 Introduction – Purpose

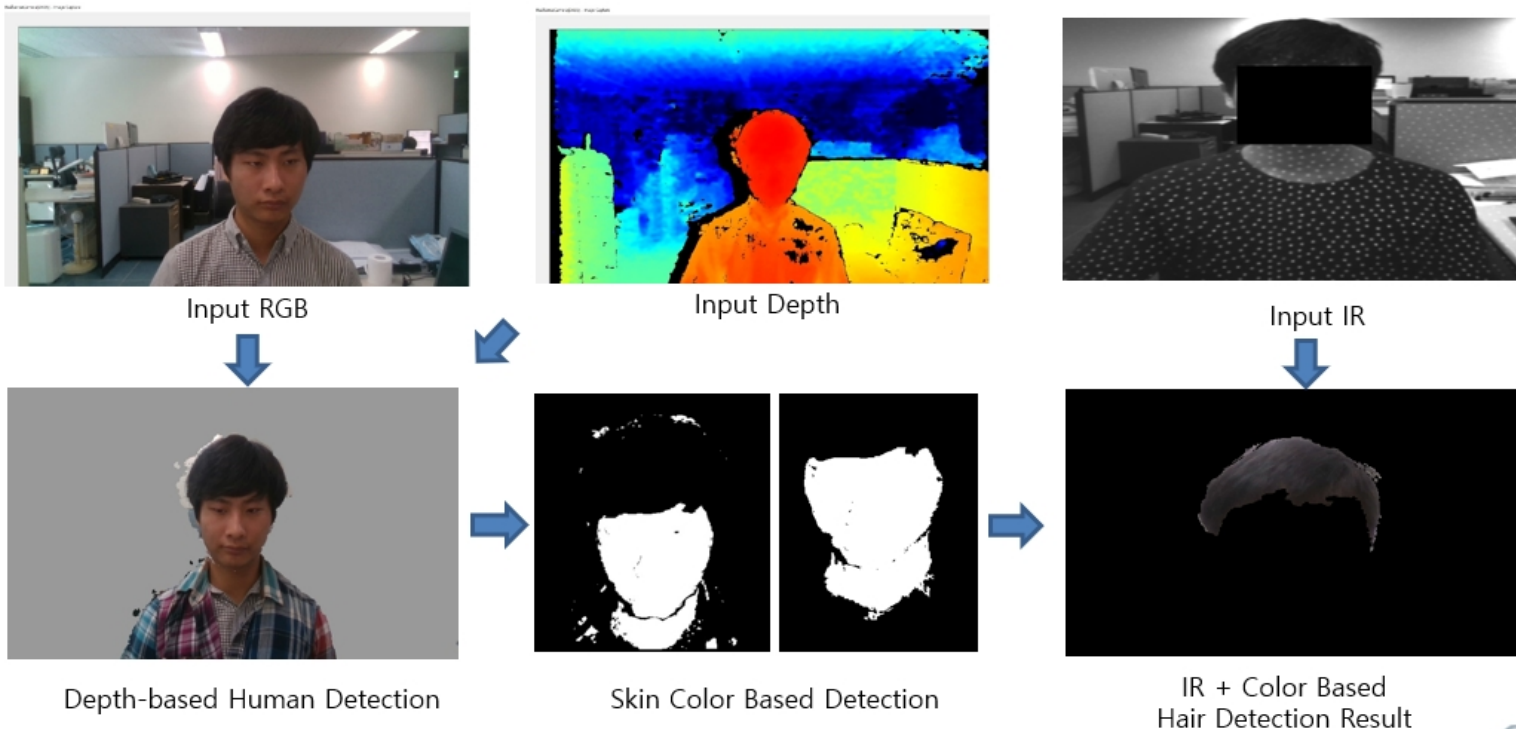
02 Abstract

➤ **The Purpose of this Project**

- This project is some of function of my task currently underway
- It's the way to implement the functionality I'm working on.
- In a nutshell, When a human image enters a camera, it is a way to segment it.
- Different from other methods, 3D Cameras are used to use depth and Infrared images solving the segment problem.

3D RealSense D435 Based Data Process

- Combining RGB, Depth and IR images using Intel RealSense D435
 - The information the brightness of pattern(structured light) information appearing in Intel IR image differing in hair and costume





Teaser Ends, Thank you!!